

C_{SS} vs Loading Matching Guidance for FPF2890

AND90282/D

For FPF2890, an internal soft-start circuit controls inrush current due to highly capacitive loads and the slew rate can be adjusted via an external capacitor.

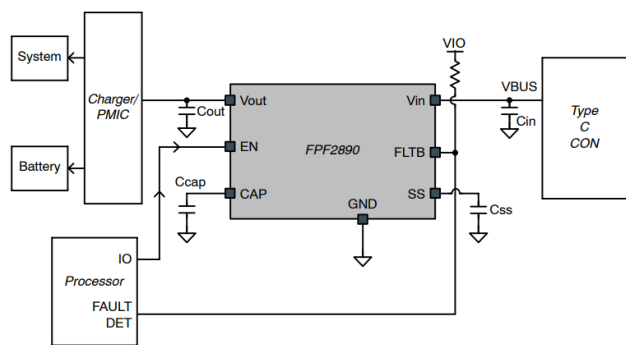


Figure 1. Shows an Example of the FPF2890 Typical Application

Slew Rate

Slew rate can be a fixed value or adjusted by external components. For the FPF2890, the slew rate can be controlled by the C_{SS} capacitor value. The output ramps up time (t_{ON}) is programmable by an external soft-start capacitor (C_{SS}). The following formula provides the estimated 10% to 90% ramp up time. Equation 1:

$$t_{ON} = \left(\frac{2 \cdot C_{SS} \cdot V_{IN}}{112.5} \right) \times 1000 \quad (\text{eq. 1})$$

Where C_{SS} is nF and t_{ON} is μs.

Figure 2 shows an example that uses a power supply to start up the FPF2890.

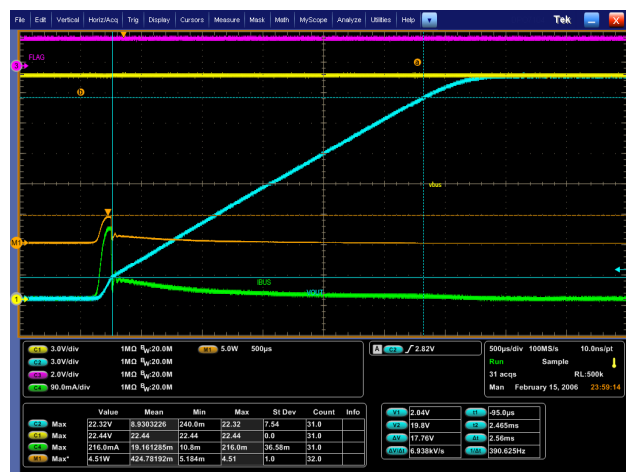


Figure 2. V_{IN} = 22 V, C_{SS} = 5.6 nF, C_{IN} = C_{OUT} = 10 μF

Type of Load

- **Capacitive Load:** In most systems, capacitors are placed throughout a design to ensure there are no voltage drops at the application. While charging these capacitors can result in an inrush current that can cause several problems for the system.
- **DC Load and Capacitor Load:** Most of the notebooks have two or more charging ports, if one of these ports is working then there is DC current at this port. If a high voltage level source plugs into other ports, there is switching between the two ports. The second port needs to work well, not only charging the output capacitors but also the DC current of the

As the voltage increases, an inrush of current flows into the uncharged capacitors. This inrush current can also be generated when a capacitive load is switched onto a power rail and must be charged to that voltage level. The amount of inrush current into the capacitors is determined by the slope of the voltage ramp, expressed as Equation 2:

$$I_{inrush} = C_{load} \times \left(\frac{dV}{dt} \right) \quad (\text{eq. 2})$$

Where *INRUSH* is the amount of inrush current caused by a capacitance, *C* is the total capacitance, *dV* is the change in voltage during ramp up and *dt* is the rise time during voltage ramp up.

Inrush Current Limit at Start Up of FPF2890

FPF2890 has the current limit protection functions at start up period. There are two power limitation levels will be applied according to different voltage level of V_{OUT}, when V_{OUT} < 1 V like V_{OUT} was short to ground directly, power limitation is 24 W and current limitation is 4.8 A, while Vout goes up above 1.1 V, the power limitation increased to 42/60 W, but the load current will not over 8 A max at any condition, and when this limitation last more than 512 s, then FPF2890MN will turn off switch. Detailed information please refer to [FPF2890 \(onsemi.com\)](http://www.onsemi.com).

Challenges with Inrush Current

One key challenge is if the power supply cannot handle the amount of inrush current needed to charge that capacitor, then the voltage on that rail will be pulled down. Another key challenge is if the load is too big then the inrush current will become huge which may trigger FPF2890 power limit and cause the system cannot start up normally.

Figures 3 and 4 shows examples that use start up the FPF2890 with bigger capacitor load.



Figure 3. $V_{IN} = 22\text{ V}$, $C_{SS} = 5.6\text{ nF}$,
 $C_{IN} = 10\text{ }\mu\text{F}$, $C_{OUT} = 250\text{ }\mu\text{F}$

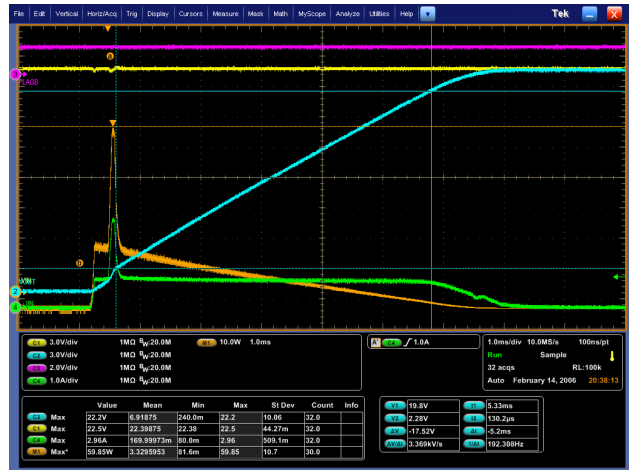


Figure 5. $V_{IN} = 22\text{ V}$, $C_{SS} = 10\text{ nF}$,
 $C_{IN} = 10\text{ }\mu\text{F}$, $C_{OUT} = 280\text{ }\mu\text{F}$



Figure 4. $V_{IN} = 22\text{ V}$, $C_{SS} = 5.6\text{ nF}$,
 $C_{IN} = 10\text{ }\mu\text{F}$, $C_{OUT} = 280\text{ }\mu\text{F}$

(For this file the yellow line is V_{IN} , Blue is V_{OUT} , Green is I_{IN} , Orange is Power of $(V_{IN} - V_{OUT}) \times I_{IN}$, Purple is FLTB signal.)

From Figure 3, V_{OUT} could be powered up successfully but there is around $410\text{ }\mu\text{s}$ time triggered the power limit. If we increase the C_{OUT} value more, showing as Figure 4, then the V_{OUT} cannot power up successfully. If $280\text{ }\mu\text{F}$ capacitor is needed to power up for customer system, then you can reduce inrush current by increasing the voltage rise time on the load capacitance and slowing down the rate at which the capacitors charge. Figure 5 shows an example that powers up $C_{OUT} 280\text{ }\mu\text{F}$ capacitor using 10 nF C_{SS} capacitor.

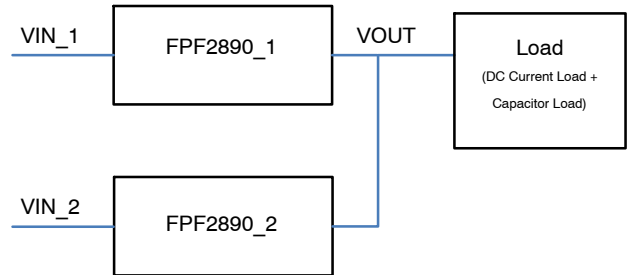


Figure 6. Two Load Switch Switching Application Block

Figure 7 and 8 shows examples that using different C_{SS} to switch two load switches with 3 A DC current and $300\text{ }\mu\text{F}$ capacitor. When the C_{SS} value is 10 nF , the FPF2890_2 can start up normally while the power margin is small. Once changed the value to 20 nF , the power margin becomes larger for this application.

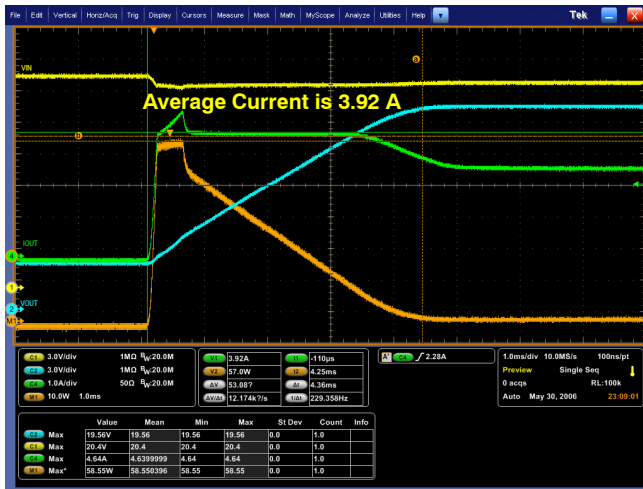


Figure 7. $V_{IN} = 20\text{ V}$, $C_{SS} = 10\text{ nF}$

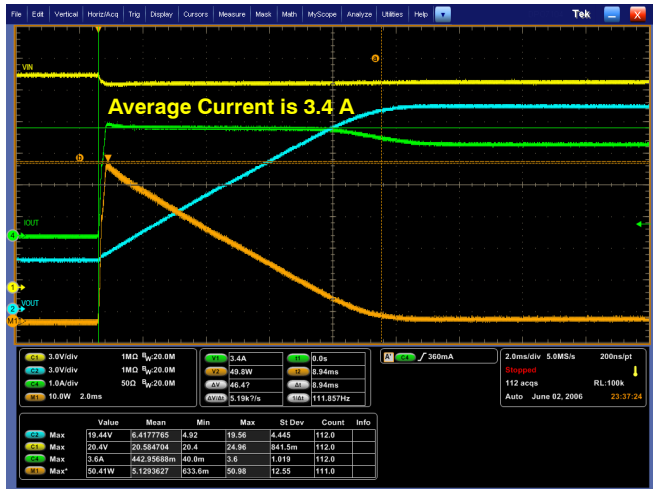


Figure 8. $V_{IN} = 20\text{ V}$, $C_{SS} = 20\text{ nF}$

How to Design for Inrush Current

For the application of above cases, we can increase the startup time of V_{OUT} to solve the power limitation and enable the system to start up normally. But we also need to

check the SOA curve for the max current limitation of safety application. For Figure 8, the average current is 3.4 A, based on SOA curve, the average SOA current around 8 ms is 5.5 A Figure 9.

T3Ster Master: SOA Plot, $T_{j\text{-max}} = 150.00\text{ }^{\circ}\text{C}$, $R_{\text{th-JC}} = 3.39\text{ K/W}$ (manual entry), $R_{\text{ds(on)}} = 0.033\text{ }\Omega$, $U_{\text{max}} = 28.00\text{ V}$, $I_{\text{max}} = 30.00\text{ A}$

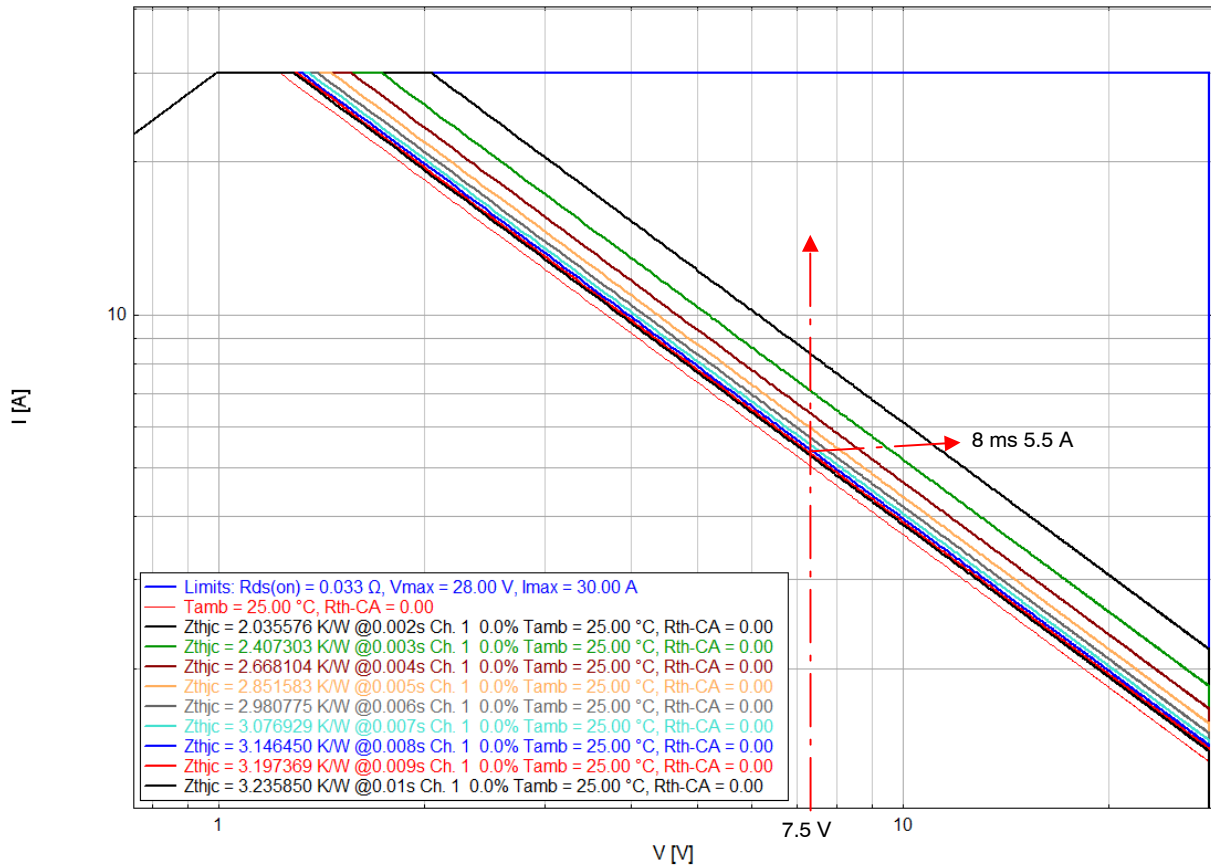


Figure 9. Safe Operating Area (SOA) Curves for Power Switch

AND90282/D

This setting condition is reasonable and safety. In addition, when two switches change, customers can use this software to reduce the DC current.

onsemi, **Onsemi**, and other names, marks, and brands are registered and/or common law trademarks of Semiconductor Components Industries, LLC dba "**onsemi**" or its affiliates and/or subsidiaries in the United States and/or other countries. **onsemi** owns the rights to a number of patents, trademarks, copyrights, trade secrets, and other intellectual property. A listing of **onsemi**'s product/patent coverage may be accessed at www.onsemi.com/site/pdf/Patent-Marking.pdf. **onsemi** reserves the right to make changes at any time to any products or information herein, without notice. The information herein is provided "as-is" and **onsemi** makes no warranty, representation or guarantee regarding the accuracy of the information, product features, availability, functionality, or suitability of its products for any particular purpose, nor does **onsemi** assume any liability arising out of the application or use of any product or circuit, and specifically disclaims any and all liability, including without limitation special, consequential or incidental damages. Buyer is responsible for its products and applications using **onsemi** products, including compliance with all laws, regulations and safety requirements or standards, regardless of any support or applications information provided by **onsemi**. "Typical" parameters which may be provided in **onsemi** data sheets and/or specifications can and do vary in different applications and actual performance may vary over time. All operating parameters, including "Typicals" must be validated for each customer application by customer's technical experts. **onsemi** does not convey any license under any of its intellectual property rights nor the rights of others. **onsemi** products are not designed, intended, or authorized for use as a critical component in life support systems or any FDA Class 3 medical devices or medical devices with a same or similar classification in a foreign jurisdiction or any devices intended for implantation in the human body. Should Buyer purchase or use **onsemi** products for any such unintended or unauthorized application, Buyer shall indemnify and hold **onsemi** and its officers, employees, subsidiaries, affiliates, and distributors harmless against all claims, costs, damages, and expenses, and reasonable attorney fees arising out of, directly or indirectly, any claim of personal injury or death associated with such unintended or unauthorized use, even if such claim alleges that **onsemi** was negligent regarding the design or manufacture of the part. **onsemi** is an Equal Opportunity/Affirmative Action Employer. This literature is subject to all applicable copyright laws and is not for resale in any manner.

ADDITIONAL INFORMATION

TECHNICAL PUBLICATIONS:

Technical Library: www.onsemi.com/design/resources/technical-documentation
onsemi Website: www.onsemi.com

ONLINE SUPPORT: www.onsemi.com/support

For additional information, please contact your local Sales Representative at www.onsemi.com/support/sales