

ON Semiconductor

Is Now



To learn more about onsemi™, please visit our website at
www.onsemi.com

onsemi and onsemi. and other names, marks, and brands are registered and/or common law trademarks of Semiconductor Components Industries, LLC dba "onsemi" or its affiliates and/or subsidiaries in the United States and/or other countries. onsemi owns the rights to a number of patents, trademarks, copyrights, trade secrets, and other intellectual property. A listing of onsemi product/patent coverage may be accessed at www.onsemi.com/site/pdf/Patent-Marking.pdf. onsemi reserves the right to make changes at any time to any products or information herein, without notice. The information herein is provided "as-is" and onsemi makes no warranty, representation or guarantee regarding the accuracy of the information, product features, availability, functionality, or suitability of its products for any particular purpose, nor does onsemi assume any liability arising out of the application or use of any product or circuit, and specifically disclaims any and all liability, including without limitation special, consequential or incidental damages. Buyer is responsible for its products and applications using onsemi products, including compliance with all laws, regulations and safety requirements or standards, regardless of any support or applications information provided by onsemi. "Typical" parameters which may be provided in onsemi data sheets and/or specifications can and do vary in different applications and actual performance may vary over time. All operating parameters, including "Typicals" must be validated for each customer application by customer's technical experts. onsemi does not convey any license under any of its intellectual property rights nor the rights of others. onsemi products are not designed, intended, or authorized for use as a critical component in life support systems or any FDA Class 3 medical devices or medical devices with a same or similar classification in a foreign jurisdiction or any devices intended for implantation in the human body. Should Buyer purchase or use onsemi products for any such unintended or unauthorized application, Buyer shall indemnify and hold onsemi and its officers, employees, subsidiaries, affiliates, and distributors harmless against all claims, costs, damages, and expenses, and reasonable attorney fees arising out of, directly or indirectly, any claim of personal injury or death associated with such unintended or unauthorized use, even if such claim alleges that onsemi was negligent regarding the design or manufacture of the part. onsemi is an Equal Opportunity/Affirmative Action Employer. This literature is subject to all applicable copyright laws and is not for resale in any manner. Other names and brands may be claimed as the property of others.

BUV20

SWITCHMODE™ Series NPN Silicon Power Transistor

SWITCHMODE series NPN silicon power transistors are designed for high speed, high current, high power applications.

- High DC current gain:
 $h_{FE} \text{ min} = 20 \text{ at } I_C = 25 \text{ A}$
 $= 10 \text{ at } I_C = 50 \text{ A}$
- Low $V_{CE(sat)}$:
 $V_{CE(sat)} \text{ max.} = 0.6 \text{ V at } I_C = 25 \text{ A}$
 $= 0.9 \text{ V at } I_C = 50 \text{ A}$
- Very fast switching times:
 $T_F = 0.25 \mu\text{s at } I_C = 50 \text{ A}$

MAXIMUM RATINGS

Rating	Symbol	BUV20	BUV60	Unit
Collector-Emitter Voltage	$V_{CEO(sus)}$	125		Vdc
Collector-Base Voltage	V_{CBO}	160	260	Vdc
Emitter-Base Voltage	V_{EBO}	7		Vdc
Collector-Emitter Voltage ($V_{BE} = -1.5 \text{ V}$)	V_{CEX}	160	260	Vdc
Collector-Emitter voltage ($R_{BE} = 100 \Omega$)	V_{CER}	150	260	Vdc
Collector-Current — Continuous — Peak ($PW \leq 10 \text{ ms}$)	I_C I_{CM}	50 60		Adc Apk
Base-Current continuous	I_B	10		Adc
Total Power Dissipation @ $T_C = 25^\circ\text{C}$	P_D	250		Watts
Operating and Storage Junction Temperature Range	T_J, T_{stg}	-65 to 200		$^\circ\text{C}$

THERMAL CHARACTERISTICS

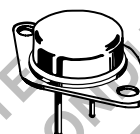
Characteristic	Symbol	BUV20	BUV60	Unit
Thermal Resistance, Junction to Case	θ_{JC}	0.7		$^\circ\text{C/W}$



ON Semiconductor®

<http://onsemi.com>

**50 AMPERES
NPN SILICON POWER
METAL TRANSISTOR
125 VOLTS, 250 WATTS**



CASE 197A-05
TO-204AE
(TO-3)

BUV20

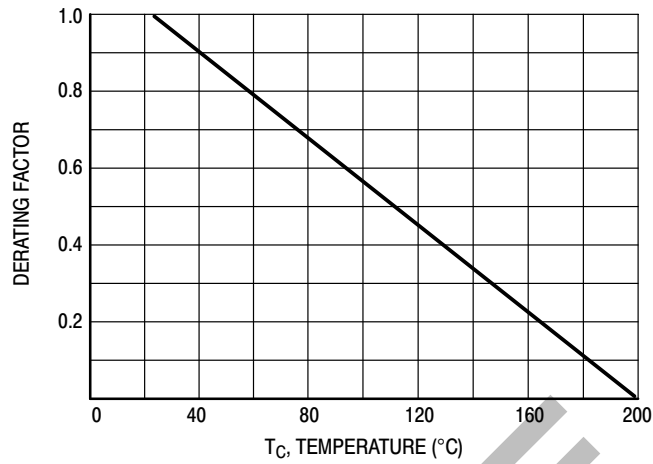


Figure 1. Power Derating

ELECTRICAL CHARACTERISTICS (T_C = 25°C unless otherwise noted)

Characteristic	Symbol	Min	Max	Unit
----------------	--------	-----	-----	------

OFF CHARACTERISTICS¹

Collector-Emitter Sustaining Voltage (I _C = 200 mA, I _B = 0, L = 25 mH)	BUV20, BUV60	V _{CEO(sus)}	125		Vdc
Collector Cutoff Current at Reverse Bias (V _{CE} = 140 V, V _{BE} = - 1.5 V) (V _{CE} = 140 V, V _{BE} = - 1.5 V, T _C = 125°C) (V _{CE} = 260 V, V _{BE} = - 1.5 V)	BUV20 BUV20 BUV60	I _{CEX}		3.0 12	mAdc
Collector-Emitter Cutoff Current (V _{CE} = 100 V)	BUV20	I _{CEO}		3.0	mAdc
Emitter-Base Reverse Voltage (I _E = 50 mA)	BUV20, BUV60	V _{EBO}	7		V
Emitter-Cutoff Current (V _{EB} = 5 V)	BUV20, BUV60	I _{EBO}		1.0	mAdc

SECOND BREAKDOWN

Second Breakdown Collector Current with base forward biased (V _{CE} = 20 V, t = 1 s) (V _{CE} = 40 V, t = 1 s)	I _{S/b}	12 1.5			Adc
---	------------------	-----------	--	--	-----

ON CHARACTERISTICS¹

DC Current Gain (I _C = 25 A, V _{CE} = 2 V) (I _C = 50 A, V _{CE} = 4 V)	BUV20 BUV20	h _{FE}	20 10	60 -	
Collector-Emitter Saturation Voltage (I _C = 25 A, I _B = 2.5 A) (I _C = 50 A, I _B = 5 A)	BUV20 BUV20	V _{CE(sat)}		0.6 1.2	Vdc
Base-Emitter Saturation Voltage (I _C = 50 A, I _B = 5 A)0	BUV20	V _{BE(sat)}		2.0	Vdc
Collector-Emitter Saturation Voltage (I _C = 25 A, I _B = 1.25 A) (I _C = 50 A, I _B = 5 A) (I _C = 60 A, I _B = 7.5 A)	BUV60 BUV60 BUV60	V _{CE(sat)}		0.9 0.9 1.2	Vdc
Base-Emitter Saturation Voltage (I _C = 50 A, I _B = 5 A) (I _C = 60 A, I _B = 7.5 A)	BUV60 BUV60	V _{BE(sat)}		1.6 1.8	Vdc

DYNAMIC CHARACTERISTICS

Current Gain — Bandwidth Product (V _{CE} = 15 V, I _C = 2 A, f = 4 MHz)	f _T	8.0			MHz
---	----------------	-----	--	--	-----

BUV20

ELECTRICAL CHARACTERISTICS ($T_C = 25^\circ\text{C}$ unless otherwise noted)

Characteristic	Symbol	Min	Max	Unit
----------------	--------	-----	-----	------

SWITCHING CHARACTERISTICS (Resistive Load)

Turn-on Time	$(I_C = 50\text{ A}, I_{B1} = I_{B2} = 5\text{ A},$ $V_{CC} = 30\text{ V}, R_C = 0.6\ \Omega)$	t_{on}		1.5	μs
Storage Time		t_s		1.2	
Fall Time		t_f		0.25	

¹ Pulse Test: Pulse Width $\leq 300\ \mu\text{s}$, Duty Cycle $\leq 2\%$.

OBSOLETE
THIS DEVICE IS OBSOLETE
PLEASE CONTACT YOUR ON SEMICONDUCTOR
REPRESENTATIVE FOR INFORMATION

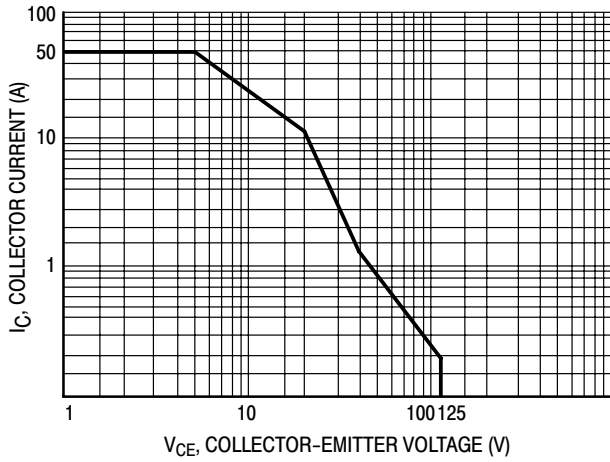


Figure 2. Active Region Safe Operating Area

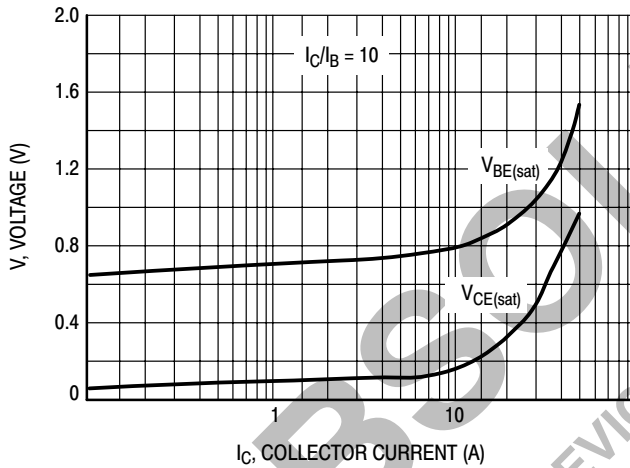


Figure 3. "On" Voltages

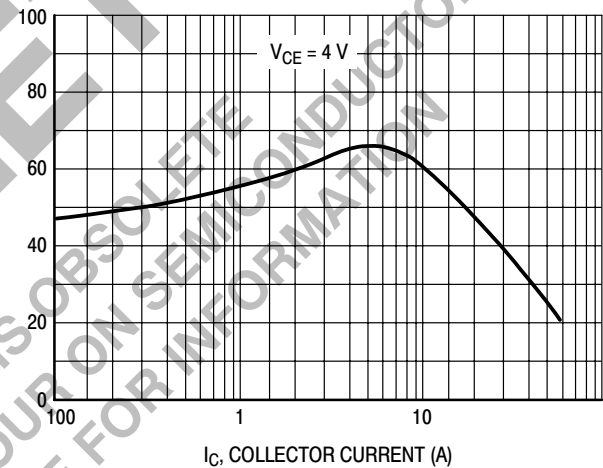


Figure 4. DC Current Gain

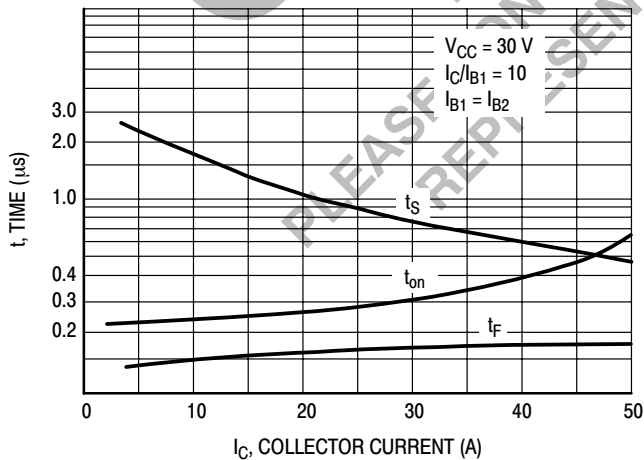


Figure 5. Resistive Switching Performance

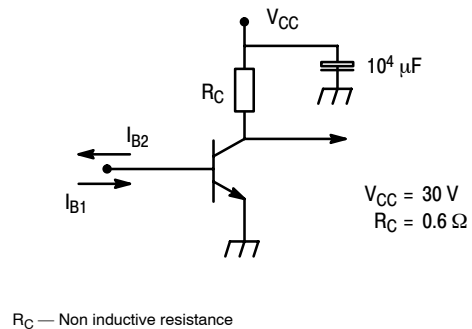


Figure 6. Switching Times Test Circuit

There are two limitations on the power handling ability of a transistor: average junction temperature and second breakdown. Safe operating area curves indicate $I_C - V_{CE}$ limits of the transistor that must be observed for reliable operation i.e., the transistor must not be subjected to greater dissipation than the curves indicate.

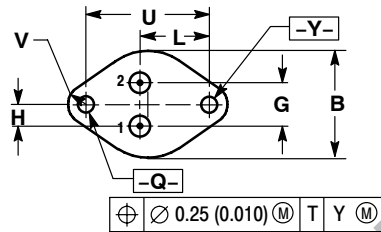
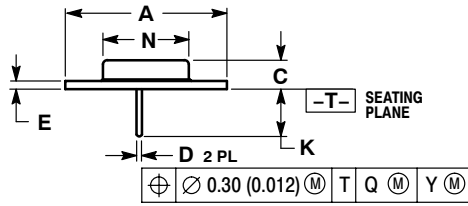
The data of Figure 2 is based on $T_C = 25^\circ\text{C}$. $T_{J(pk)}$ is variable depending on power level. Second breakdown limitations do not derate the same as thermal limitations.

At high case temperatures, thermal limitations will reduce the power that can be handled to values less than the limitations imposed by second breakdown.

BUV20

PACKAGE DIMENSIONS


TO-204AE (TO-3)
CASE 197A-05
ISSUE J



- NOTES:
1. DIMENSIONING AND TOLERANCING PER ANSI Y14.5M, 1982.
 2. CONTROLLING DIMENSION: INCH.

DIM	INCHES		MILLIMETERS	
	MIN	MAX	MIN	MAX
A	1.530 REF		38.86 REF	
B	0.990	1.050	25.15	26.67
C	0.250	0.335	6.35	8.51
D	0.057	0.063	1.45	1.60
E	0.060	0.070	1.53	1.77
G	0.430 BSC		10.92 BSC	
H	0.215 BSC		5.46 BSC	
K	0.440	0.480	11.18	12.19
L	0.665 BSC		16.89 BSC	
N	0.760	0.830	19.31	21.08
Q	0.151	0.165	3.84	4.19
U	1.187 BSC		30.15 BSC	
V	0.131	0.188	3.33	4.77

SWITCHMODE is a trademark of Semiconductor Components Industries, LLC (SCILLC)

ON Semiconductor and  are registered trademarks of Semiconductor Components Industries, LLC (SCILLC). SCILLC reserves the right to make changes without further notice to any products herein. SCILLC makes no warranty, representation or guarantee regarding the suitability of its products for any particular purpose, nor does SCILLC assume any liability arising out of the application or use of any product or circuit, and specifically disclaims any and all liability, including without limitation special, consequential or incidental damages. "Typical" parameters which may be provided in SCILLC data sheets and/or specifications can and do vary in different applications and actual performance may vary over time. All operating parameters, including "Typicals" must be validated for each customer application by customer's technical experts. SCILLC does not convey any license under its patent rights nor the rights of others. SCILLC products are not designed, intended, or authorized for use as components in systems intended for surgical implant into the body, or other applications intended to support or sustain life, or for any other application in which the failure of the SCILLC product could create a situation where personal injury or death may occur. Should Buyer purchase or use SCILLC products for any such unintended or unauthorized application, Buyer shall indemnify and hold SCILLC and its officers, employees, subsidiaries, affiliates, and distributors harmless against all claims, costs, damages, and expenses, and reasonable attorney fees arising out of, directly or indirectly, any claim of personal injury or death associated with such unintended or unauthorized use, even if such claim alleges that SCILLC was negligent regarding the design or manufacture of the part. SCILLC is an Equal Opportunity/Affirmative Action Employer. This literature is subject to all applicable copyright laws and is not for resale in any manner.

PUBLICATION ORDERING INFORMATION

LITERATURE FULFILLMENT:
Literature Distribution Center for ON Semiconductor
P.O. Box 5163, Denver, Colorado 80217 USA
Phone: 303-675-2175 or 800-344-3860 Toll Free USA/Canada
Fax: 303-675-2176 or 800-344-3867 Toll Free USA/Canada
Email: orderlit@onsemi.com

N. American Technical Support: 800-282-9855 Toll Free
USA/Canada
Europe, Middle East and Africa Technical Support:
Phone: 421 33 790 2910
Japan Customer Focus Center
Phone: 81-3-5773-3850

ON Semiconductor Website: www.onsemi.com
Order Literature: <http://www.onsemi.com/orderlit>
For additional information, please contact your local Sales Representative