

2V, Fully Differential Optical Coupled Isolation Amplifier

FOD7840

Description

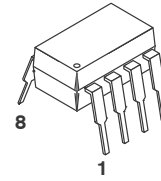
The FOD7840x family is an optically coupled isolation amplifier. It consists of a gallium aluminum arsenide (GaAlAs) light emitting diode and a highly accurate sigma-delta A/D converter on the input side, and a precise D/A converter with differential output on the output side. This optocoupler is used for current sensing in motor drives or general-purpose current sensing and monitoring. The FOD7840x series offers various gain tolerances: FOD7840A ($\pm 1\%$ gain tolerance) and the FOD7840B ($\pm 3\%$ gain tolerance) and FOD7840 ($\pm 5\%$ gain tolerance).

Features

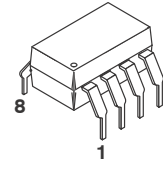
- Advanced Sigma-Delta (Σ - Δ) A/D Converter Technology
- Fully Differential Circuit Topology
- 100 kHz Bandwidth
- -0.3 mV Input Offset Voltage
- 0.0005 V/V/ $^{\circ}$ C Gain drift vs. Temperature
- 0.02% Non-Linearity (NL200 = 0.35% Max)
- 15 kV/ μ s minimum Common Mode Rejection (CMR) at $V_{CM} = 1000$ V
- MSL Level 1
- Safety and Regulatory Approvals
 - ◆ UL/cUL1577, 3.75 kV_{RMS} for 1 Minute
 - ◆ DIN EN/IEC 60747-5-5 VIORM=891 Vpeak

Typical Applications

- General Purpose Current Sensing and Monitoring
- General Purpose Analog Signal Isolation
- Motor Phase and Rail Current Sensing
- Industrial Fieldbus Communications
- Switched Mode Power Supply Signal Isolation
- Inverter Current Sensing

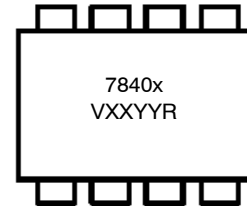


PDIP8 9.655x6.6, 2.54P
CASE 646CQ



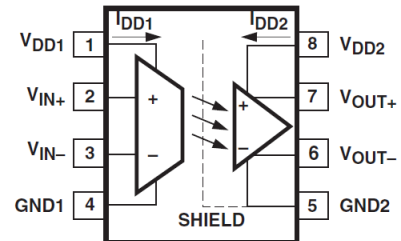
PDIP8 GW
CASE 709AF

MARKING DIAGRAM



- 7840 = Device Number
 x = Gain rank, A, B or none.
 V = DIN_EN/IEC60747-5-5 Option (only appears on component ordered with this option)
 XX = Two Digit Year Code
 YY = Two Digit Work Week
 R = Assembly Package Code
 S = Surface Mount Device
 D = Through-Hole Device

FUNCTIONAL BLOCK DIAGRAM



NOTE: 0.1 μ F bypass capacitor must be connected between pins 1 and 4, and between pins 5 and 8.

ORDERING INFORMATION

See detailed ordering and shipping information on page 11 of this data sheet.

Table 1. SAFETY AND INSULATION RATINGS

As per DIN EN/IEC 60747-17, this digital isolator is suitable for “safe electrical insulation” only within the safety limit data. Compliance with the safety ratings must be ensured by means of protective circuits.

Symbol	Parameter	Min	Typ	Max	Unit	
	Installation Classifications per DIN VDE 0110/1.89 Table 1 Rated Mains Voltage	< 150 V _{RMS}	–	I–IV	–	
		< 300 V _{RMS}	–	I–IV	–	
		< 450 V _{RMS}	–	I–III	–	
CTI	Climatic Classification	–	55/115/21	–		
	Pollution Degree (DIN VDE 0110/39)	–	2	–		
	Comparative Tracking Index	175	–	–		
V _{PR}	Input-to-Output Test Voltage, Method b, V _{IORM} × 1.875 = V _{PR} , 100% Production Test with t _m = 1 s, Partial Discharge < 5 pC	2306	–	–	V _{peak}	
	Input-to-Output Test Voltage, Method a, V _{IORM} × 1.6 = V _{PR} , Type and Sample Test with t _m = 10 s, Partial Discharge < 5 pC	1968	–	–	V _{peak}	
V _{IORM}	Highest Allowable Over Voltage (Transient Overvoltage, t _{inj} = 60 sec)	1230	–	–	V _{peak}	
V _{IOTM}	Highest Allowable Over Voltage	6000	–	–	V _{peak}	
E _{CR}	External Creepage	8.0	–	–	mm	
E _{CL}	External Clearance	7.4	–	–	mm	
DTI	Distance Through Insulation (Insulation Thickness)	0.4	–	–	mm	
T _{Case}	Safety Limit Values – Maximum Values in Failure; Case Temperature	175	–	–	°C	
P _{S,INPUT}	Safety Limit Values – Maximum Values in Failure; Input Power	400	–	–	mW	
P _{S,OUTPUT}	Safety Limit Values – Maximum Values in Failure; Output Power	600	–	–	mW	
R _{IO}	Insulation Resistance at TS, V _{IO} = 500 V	10 ⁹	–	–	Ω	
V _{ISO}	Maximum Withstanding Insulation Voltage	5000	–	–	V	

Table 2. PIN DEFINITION

Pin No.	Name	Description
1	V _{DD1}	Supply Voltage for Input Side, Relative to GND ₁
2	V _{IN+}	Positive Input
3	V _{IN-}	Negative Input (normally connected to GND ₁)
4	GND ₁	Input Side Ground
5	GND ₂	Output Side Ground
6	V _{OUT-}	Negative Output
7	V _{OUT+}	Positive Output
8	V _{DD2}	Supply Voltage for Output Side, Relative to GND ₂

FOD7840

Table 3. ABSOLUTE MAXIMUM RATINGS ($T_A = 25\text{ }^\circ\text{C}$ unless otherwise specified)

Symbol	Parameter	Min	Max	Unit
T_{STG}	Storage Temperature	-55	125	$^\circ\text{C}$
T_{OPR}	Operating Temperature	-40	100	$^\circ\text{C}$
T_J	Junction Temperature	-40	125	$^\circ\text{C}$
T_{SOL}	Lead Solder Temperature (Refer to Reflow Temperature Profile)	260		$^\circ\text{C}$
V_{DD1}, V_{DD2}	Supply Voltage	0	5.5	V
V_{IN+}, V_{IN-}	Steady State Input Voltage	-2	$V_{DD1}+0.5$	V
V_{IN+}, V_{IN-}	2 sec Transient Voltage	-6	$V_{DD1}+0.5$	V
V_{OUT+}, V_{OUT-}	Output Voltage	-0.5	$V_{DD2}+0.5$	mV
P_I	Input Power Dissipation		70	mW
P_O	Output Power Dissipation		60	mW

Stresses exceeding those listed in the Maximum Ratings table may damage the device. If any of these limits are exceeded, device functionality should not be assumed, damage may occur and reliability may be affected.

Table 4. RECOMMENDED OPERATING RANGES

Symbol	Parameter	Min	Max	Unit
T_A	Ambient Operating Temperature	-40	+85	$^\circ\text{C}$
V_{DD1}, V_{DD2}	Supply Voltage (Notes 1, 2)	4.5	5.5	V
V_{IN+}, V_{IN-}	Input Voltage (accurate and linear)	-200	200	mV
V_{IN+}, V_{IN-}	Input Voltage (functional)	-2	2	V

Functional operation above the stresses listed in the Recommended Operating Ranges is not implied. Extended exposure to stresses beyond the Recommended Operating Ranges limits may affect device reliability.

1. During power up or down, ensure that both the input and output supply voltages reach the proper recommended operating voltages to avoid any momentary instability at the output state.
2. For reliable operation at recommended operating conditions, VDD supply pins require at least a pair of external bypass capacitors, placed within 1 cm from VDD pins 1 and 8 and GND pins 4 and 5. Recommended value is 0.1 μF .

Table 5. ISOLATION CHARACTERISTICS

Apply over all recommended conditions. All typical values are measured at $T_A = 25\text{ }^\circ\text{C}$.

Symbol	Parameter	Conditions	Min	Typ	Max	Unit
V_{ISO}	Input-Output Isolation Voltage	$T_A = 25\text{ }^\circ\text{C}$, Relative Humidity < 50%, $t = 1.0$ minute, $I_{I-O} \leq 10\text{ }\mu\text{A}$, 50 Hz (Notes 3, 4)	5000	-	-	V_{RMS}
R_{ISO}	Isolation Resistance	$V_{I-O} = 500\text{ V DC}$ (Note 3)	-	10^{12}	-	
C_{ISO}	Isolation Capacitance	Frequency = 1.0 MHz (Note 3)	-	0.9	-	pF

3. Device is considered a two-terminal device: pins 1 to 4 are shorted together and pins 5 to 9 are shorted together.
4. 5,000 V_{RMS} for 1-minute duration is equivalent to 6,000 V_{RMS} for 1-second duration.

FOD7840

Table 6. DC ELECTRICAL CHARACTERISTICS

Apply over all recommended conditions, $T_A = -40\text{ }^\circ\text{C}$ to $+85\text{ }^\circ\text{C}$, $V_{IN+} = V_{IN-} = 0\text{ V}$ and $V_{DD1} = V_{DD2} = 5.0\text{ V}$, unless otherwise specified. All typical values are measured at $T_A = 25\text{ }^\circ\text{C}$.

Symbol	Parameter	Test Conditions	Min	Typ	Max	Unit	Figure
V_{OS}	Input Offset Voltage	$T_A = 25\text{ }^\circ\text{C}$	-2.0	-0.3	2.0		1, 3, 4
		$-40\text{ }^\circ\text{C} < T_A < +85\text{ }^\circ\text{C}$	-3.0		3.0	mV	1, 3, 4
$ \Delta V_{OS}/\Delta T_A $	Magnitude of Input Offset, Change vs. Temperature			2.0	10.0	$\mu\text{V}/^\circ\text{C}$	3
G1	Gain (Rank A: $\pm 1\%$)	$-200\text{ mV} < V_{IN+} < 200\text{ mV}$, $T_A = 25\text{ }^\circ\text{C}$	7.92	8.03	8.08	V/V	5, 6
G2	Gain (Rank B: $\pm 3\%$)		7.76	8.03	8.24		
G3	Gain (None: $\pm 5\%$)		7.6	8.03	8.4		
$ \Delta G/\Delta T_A $	Magnitude of V_{OUT} Gain Change vs. Temperature			0.0005		$\text{V/V}/^\circ\text{C}$	
NL ₂₀₀	V_{OUT} 200 mV Nonlinearity	$-200\text{ mV} < V_{IN+} < 200\text{ mV}$		0.0194	0.35	%	7, 8
$ \Delta \text{NL}_{200}/\Delta T_A $	Magnitude of V_{OUT} 200 mV Nonlinearity Change vs. Temperature			0.0001		$\%/^\circ\text{C}$	
NL ₁₀₀	V_{OUT} 100 mV Nonlinearity	$-100\text{ mV} < V_{IN+} < 100\text{ mV}$		0.0131	0.2	%	
$ V_{IN+} _{MAX}$	Magnitude Input Voltage before V_{OUT} Clipping			315		mV	9
I_{DD1}	Input Supply Current	$V_{IN+} = +400\text{ mV}$		7.17	12.7	mA	10
I_{DD2}	Output Supply Current	$V_{IN+} = -400\text{ mV}$		4.10	10.9		
I_{IN+}	Input Current			-0.4	5.0	μA	11
$ \Delta I_{IN+}/\Delta T_A $	Magnitude of Input Bias Current vs. Temperature			+0.31		$\text{nA}/^\circ\text{C}$	11
V_{OL}	Low Level Output Voltage			1.29		V	
V_{OH}	High Level Output Voltage			3.82		V	
V_{OCM}	Output Common-Mode Voltage		2.2	2.502	2.8	V	
$ I_{OSC} $	Output Short-Circuit Current			15		mA	
R_{IN}	Equivalent Input Impedance			793		$\text{k}\Omega$	
R_{OUT}	V_{OUT} Output Resistance			10		Ω	
CMRR_{IN}	Input DC Common-Mode Rejection Ratio			72		dB	

Product parametric performance is indicated in the Electrical Characteristics for the listed test conditions, unless otherwise noted. Product performance may not be indicated by the Electrical Characteristics if operated under different conditions.

Table 7. DC ELECTRICAL CHARACTERISTICS (Gain Rank)

Device	Gain Rank	Min	Typ	Max	Unit
FOD7840A	Gain (Rank A: $\pm 1\%$)	7.92	8.03	8.08	V/V
FOD7840B	Gain (Rank B: $\pm 3\%$)	7.76	8.03	8.24	
FOD7840	Gain (None: $\pm 5\%$)	7.6	8.03	8.4	

FOD7840

Table 8. AC ELECTRICAL CHARACTERISTICS

Apply over all recommended conditions, $T_A = -40\text{ }^\circ\text{C}$ to $+85\text{ }^\circ\text{C}$, $V_{IN+} = V_{IN-} = 0\text{ V}$ and $V_{DD1} = V_{DD2} = 5.0\text{ V}$, unless otherwise specified. All typical values are measured at $T_A = 25\text{ }^\circ\text{C}$.

Symbol	Parameter	Test Conditions	Min	Typ	Max	Unit	Figure
BW	V_{OUT} Bandwidth (-3 dB)	$V_{IN+} = 200\text{ mVpk-pk. sine wave}$	50	100		kHz	12, 13
N_{OUT}	V_{OUT} Noise	$V_{IN+} = 0\text{ V}$		24		mV_{rms}	
t_{PD10}	V_{IN} to V_{OUT} Signal Delay (50 to 10%)	$V_{IN+} = 0\text{ mV to }150\text{ mV step. Measured at output of OPA132 on Figure 15.}$		2.73	3.3	μs	14, 15
t_{PD50}	V_{IN} to V_{OUT} Signal Delay (50 to 50%)			4.22	5.6		
t_{PD90}	V_{IN} to V_{OUT} Signal Delay (50 to 90%)			6.10	9.9		
$t_{R/F}$	V_{OUT} Rise/Fall Time (10 to 90%)			3.41	6.6		
CMTI	Common Mode Transient Immunity	$T_A = 25\text{ }^\circ\text{C}$, $V_{CM} = 1000\text{ V}$	15			$\text{kV}/\mu\text{s}$	16
PSR	Power Supply Rejection	With recommended application circuit		112		mV_{rms}	

FOD7840

TYPICAL PERFORMANCE CHARACTERISTICS AND TEST CIRCUIT

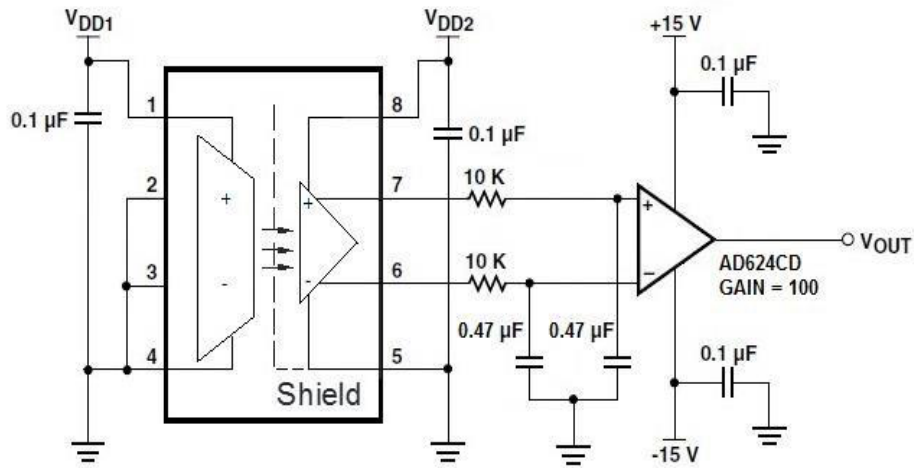


Figure 1. Input Voltage Test Circuit

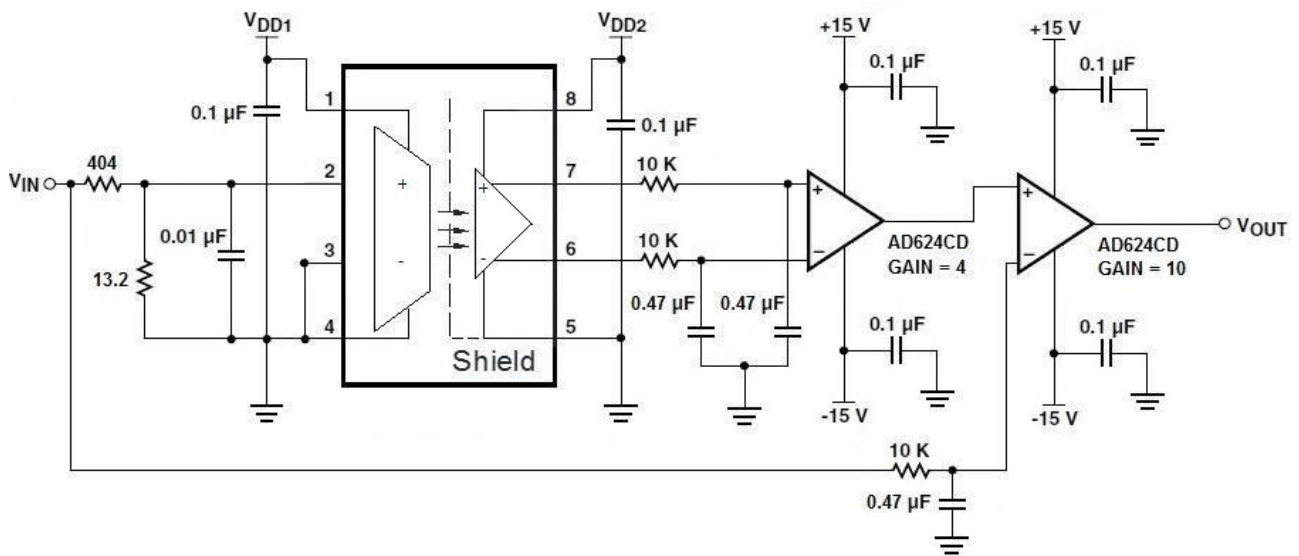


Figure 2. Gain and Nonlinearity Test Circuit

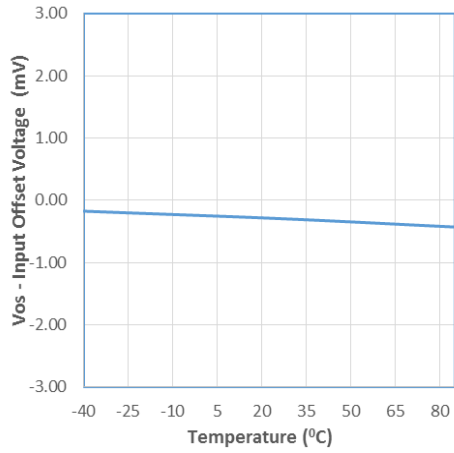


Figure 3. Input Offset Voltage vs. Temperature

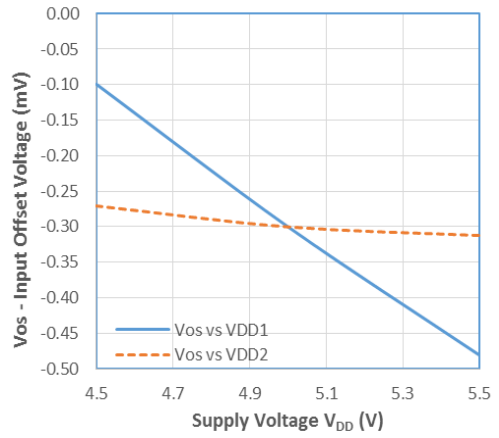


Figure 4. Input Offset Voltage vs. Supply

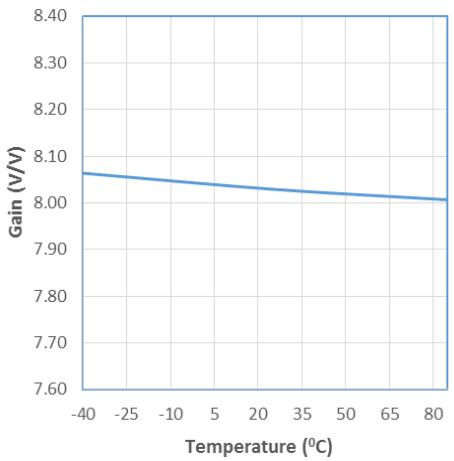


Figure 5. Gain vs. Temperature

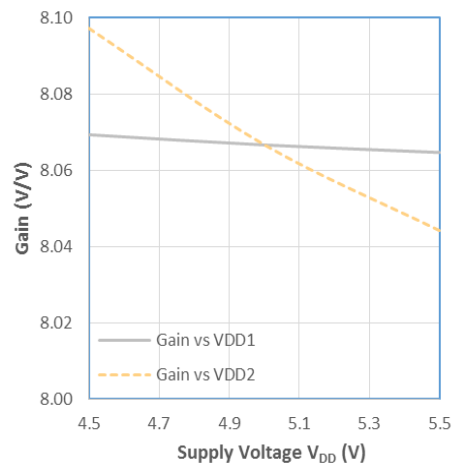


Figure 6. Gain vs. Supply

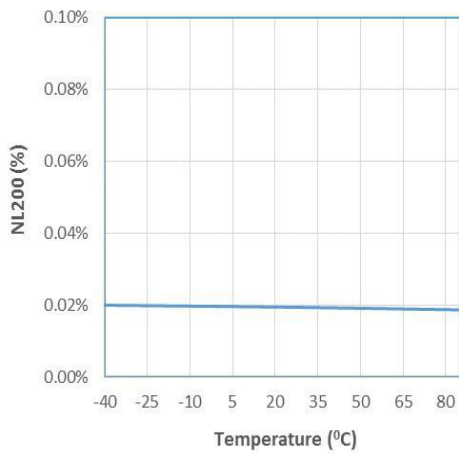


Figure 7. Nonlinearity vs. Temperature

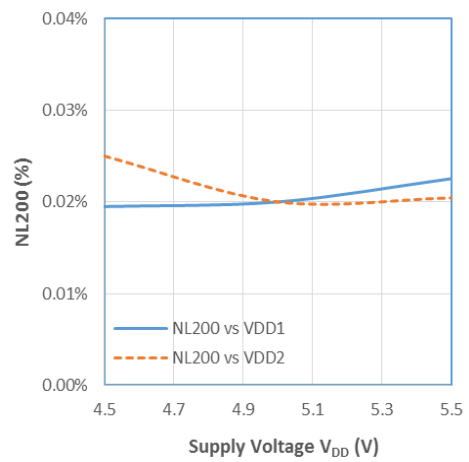


Figure 8. Nonlinearity vs. Supply

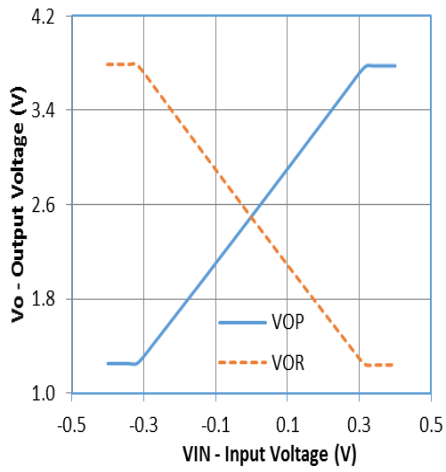


Figure 9. Output Voltage vs. Input Voltage

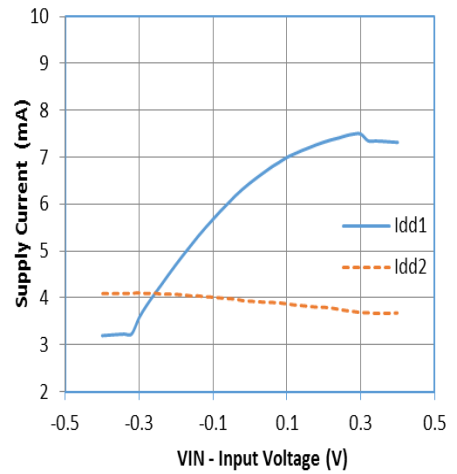


Figure 10. Supply Current vs. Input Voltage

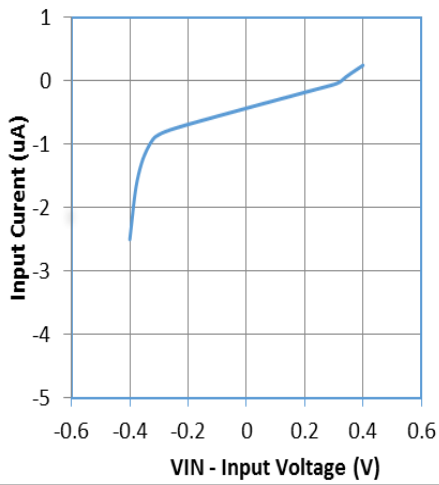


Figure 11. Input Current vs. Input Voltage

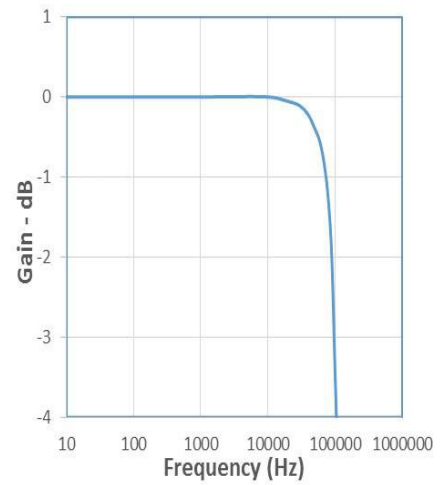


Figure 12. Supply Current vs. Input Voltage

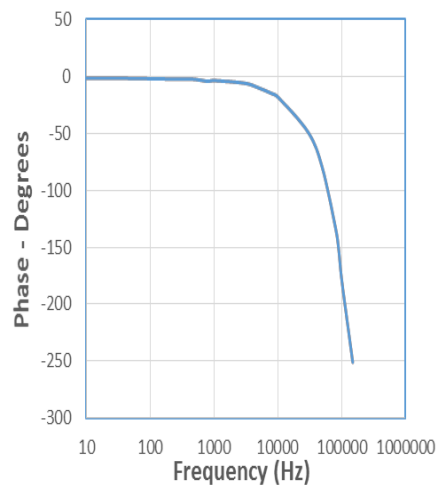


Figure 13. Phase vs. Frequency

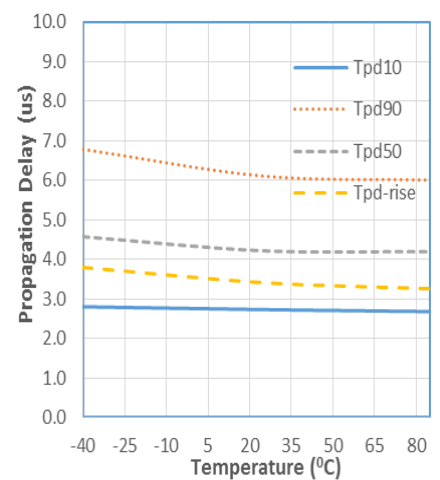


Figure 14. Propagation Delay vs. Temperature

FOD7840

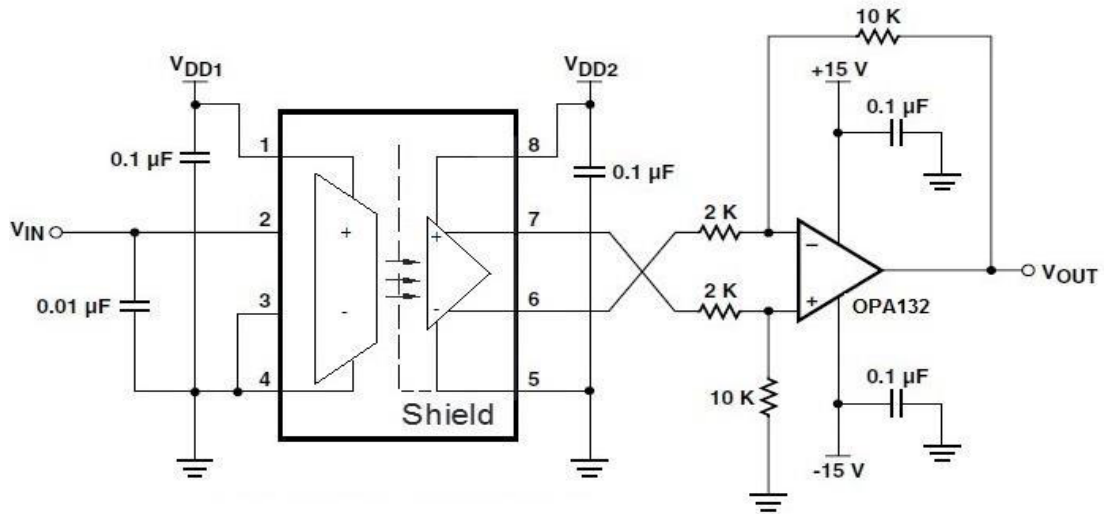


Figure 15. Propagation Delay Test Circuit

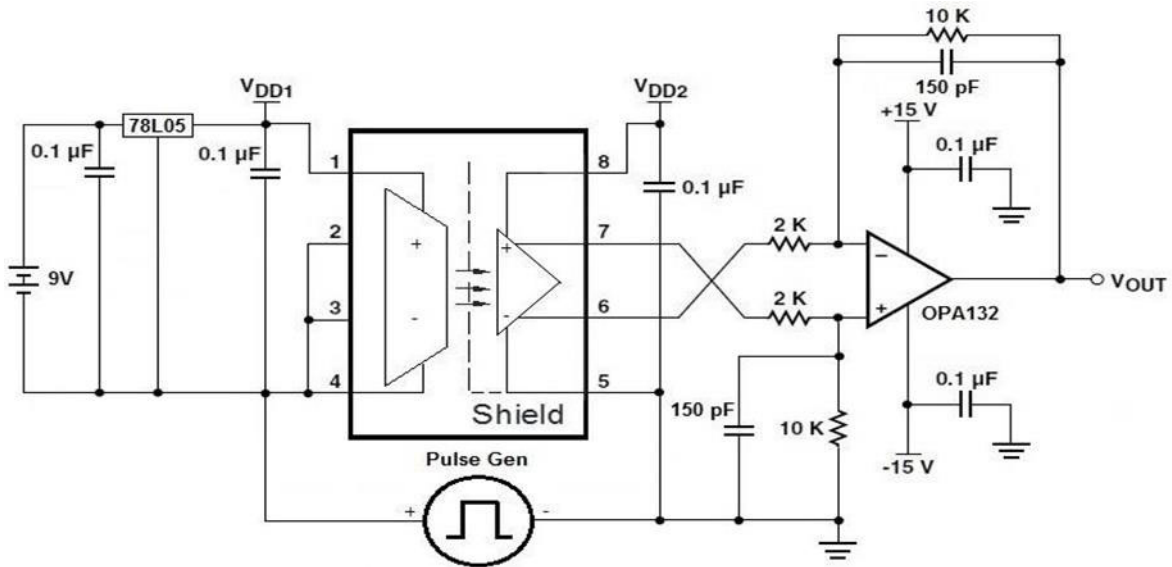


Figure 16. CMTI Test Circuit

REFLOW PROFILE

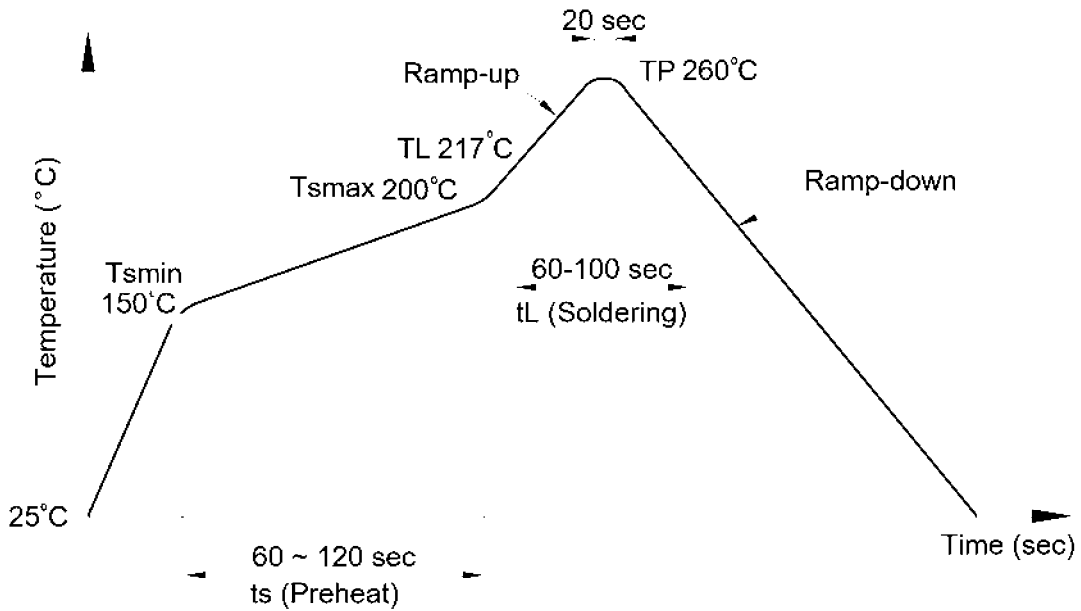


Figure 17.

Table 9. REFLOW PROFILE

Profile Feature	Pb-Free Assembly Profile
Temperature Min. (T_{smin})	150 °C
Temperature Max. (T_{smax})	200 °C
Time (t_s) from (T_{smin} to T_{smax})	60-120 s
Ramp-up Rate (t_L to t_P)	3 °C/s max.
Liquidous Temperature (T_L)	217 °C
Time (t_L) Maintained Above (T_L)	60-100 s
Peak Body Package Temperature	260 °C + 0 °C / -5 °C
Ramp-down Rate (T_P to T_L)	3-6 °C/s max.

FOD7840

Table 10. ORDERING INFORMATION

Part Number	Grade*	Package	Shipping†
FOD7840SV	none	SMT 8-Pin (Lead Bend), DIN EN/IEC60747-5-5 option	50 Units / Tube
FOD7840SD	none	SMT 8-Pin (Lead Bend)	1000 / Tape & Reel
FOD7840SDV	none	SMT 8-Pin (Lead Bend), DIN EN/IEC60747-5-5 option	1000 / Tape & Reel
FOD7840A	A	DIP 8-Pin	50 Units / Tube
FOD7840AV	A	DIP 8-Pin, DIN EN/IEC60747-5-5 option	50 Units / Tube
FOD7840ASV	A	SMT 8-Pin (Lead Bend), DIN EN/IEC60747-5-5 option	50 Units / Tube
FOD7840ASD	A	SMT 8-Pin (Lead Bend)	1000 / Tape & Reel
FOD7840ASDV	A	SMT 8-Pin (Lead Bend), DIN EN/IEC60747-5-5 option	1000 / Tape & Reel
FOD7840B	B	DIP 8-Pin	50 Units / Tube
FOD7840BV	B	DIP 8-Pin, DIN EN/IEC60747-5-5 option	50 Units / Tube
FOD7840BSV	B	SMT 8-Pin (Lead Bend), DIN EN/IEC60747-5-5 option	50 Units / Tube
FOD7840BSD	B	SMT 8-Pin (Lead Bend)	1000 / Tape & Reel
FOD7840BSDV	B	SMT 8-Pin (Lead Bend), DIN EN/IEC60747-5-5 option	1000 / Tape & Reel
FOD7840	none	DIP 8-Pin	50 Units / Tube
FOD7840V	none	DIP 8-Pin, DIN EN/IEC60747-5-5 option	50 Units / Tube

† For information on tape and reel specifications, including part orientation and tape sizes, please refer to our Tape and Reel Packaging Specifications Brochure, [BRD8011/D](#).

* Please Refer to Table 7.

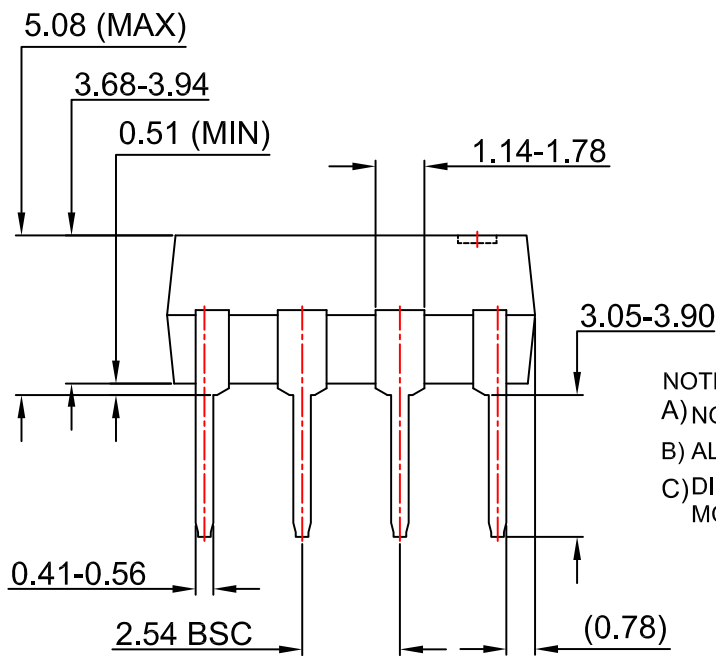
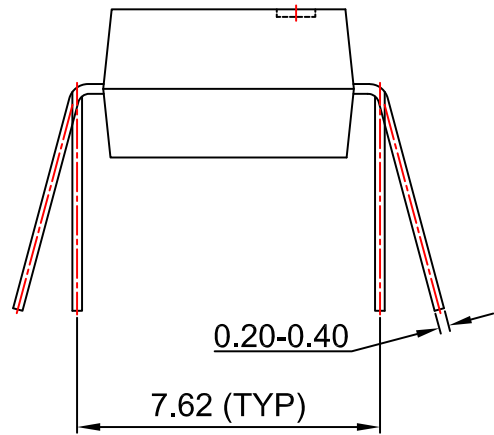
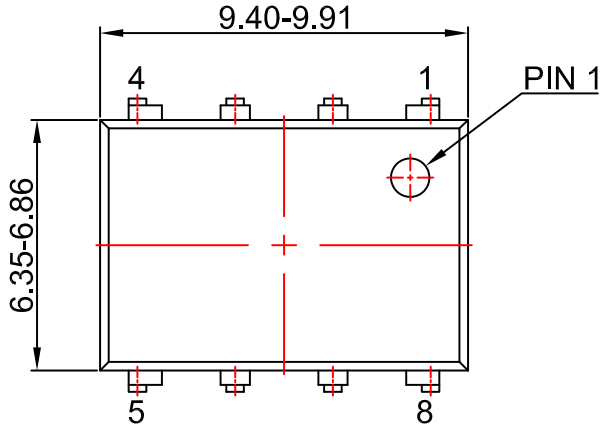
FOD7840

REVISION HISTORY

Revision	Description of Changes	Date
P0	Initial Preliminary document release.	2/4/2026
P1	Updated marking coding in marking diagram.	3/2/2026
0	Removed Case package options 646BW, 709AC & 709AD and added package option 709AF for initial document release.	4/17/2026

PDIP8 9.655x6.6, 2.54P
CASE 646CQ
ISSUE 0

DATE 18 SEP 2017



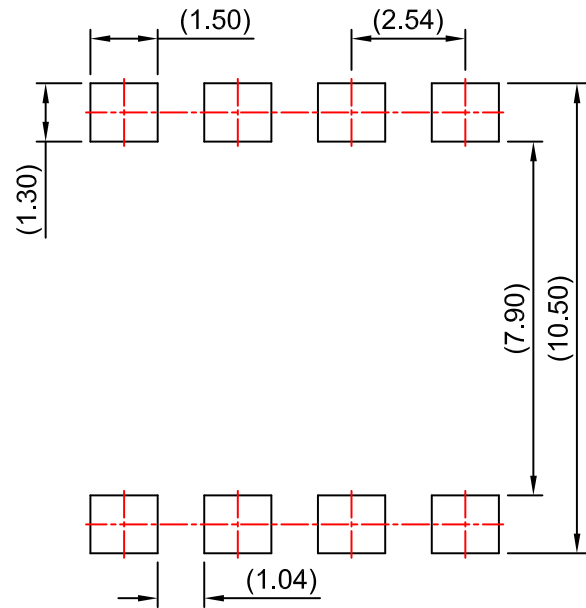
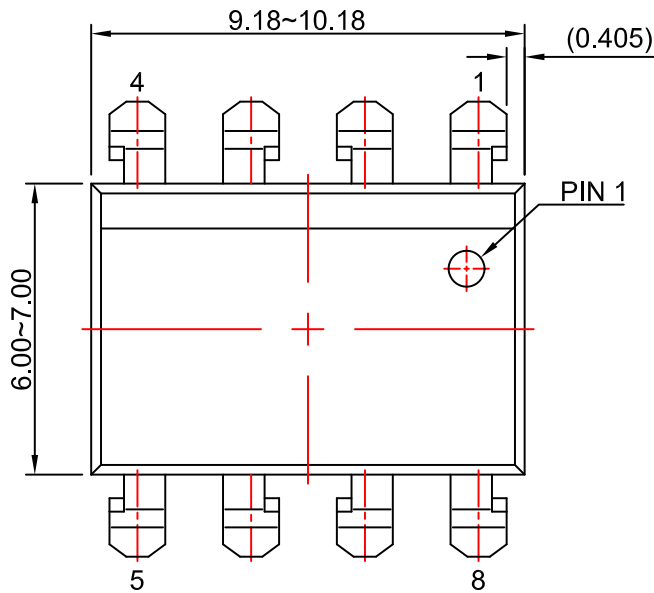
NOTES:
A) NO STANDARD APPLIES TO THIS PACKAGE
B) ALL DIMENSIONS ARE IN MILLIMETERS.
C) DIMENSIONS ARE EXCLUSIVE OF BURRS, MOLD FLASH, AND TIE BAR EXTRUSION

DOCUMENT NUMBER:	98AON13446G	Electronic versions are uncontrolled except when accessed directly from the Document Repository. Printed versions are uncontrolled except when stamped "CONTROLLED COPY" in red.
DESCRIPTION:	PDIP8 9.655X6.6, 2.54P	PAGE 1 OF 1

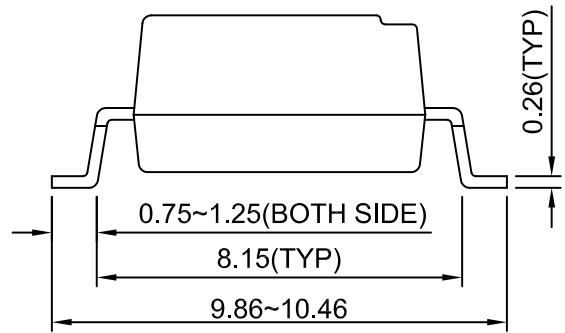
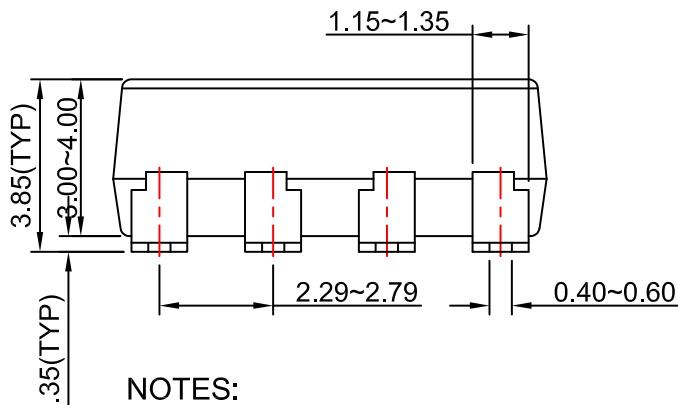
onsemi and ONSEMI are trademarks of Semiconductor Components Industries, LLC dba onsemi or its subsidiaries in the United States and/or other countries. onsemi reserves the right to make changes without further notice to any products herein. onsemi makes no warranty, representation or guarantee regarding the suitability of its products for any particular purpose, nor does onsemi assume any liability arising out of the application or use of any product or circuit, and specifically disclaims any and all liability, including without limitation special, consequential or incidental damages. onsemi does not convey any license under its patent rights nor the rights of others.

PDIP8 GW
CASE 709AF
ISSUE O

DATE 31 AUG 2016



LAND PATTERN RECOMMENDATION



NOTES:

- A) NO STANDARD APPLIES TO THIS PACKAGE.
- B) ALL DIMENSIONS ARE IN MILLIMETERS.
- C) DIMENSIONS ARE EXCLUSIVE OF BURRS, MOLD FLASH, AND TIE BAR EXTRUSION

DOCUMENT NUMBER:	98AON13458G	Electronic versions are uncontrolled except when accessed directly from the Document Repository. Printed versions are uncontrolled except when stamped "CONTROLLED COPY" in red.
DESCRIPTION:	PDIP8 GW	PAGE 1 OF 1

onsemi and ONSEMI are trademarks of Semiconductor Components Industries, LLC dba onsemi or its subsidiaries in the United States and/or other countries. onsemi reserves the right to make changes without further notice to any products herein. onsemi makes no warranty, representation or guarantee regarding the suitability of its products for any particular purpose, nor does onsemi assume any liability arising out of the application or use of any product or circuit, and specifically disclaims any and all liability, including without limitation special, consequential or incidental damages. onsemi does not convey any license under its patent rights nor the rights of others.

onsemi, **Onsemi**, and other names, marks, and brands are registered and/or common law trademarks of Semiconductor Components Industries, LLC dba "**onsemi**" or its affiliates and/or subsidiaries in the United States and/or other countries. **onsemi** owns the rights to a number of patents, trademarks, copyrights, trade secrets, and other intellectual property. A listing of **onsemi**'s product/patent coverage may be accessed at www.onsemi.com/site/pdf/Patent-Marking.pdf. **onsemi** reserves the right to make changes at any time to any products or information herein, without notice. The information herein is provided "as-is" and **onsemi** makes no warranty, representation or guarantee regarding the accuracy of the information, product features, availability, functionality, or suitability of its products for any particular purpose, nor does **onsemi** assume any liability arising out of the application or use of any product or circuit, and specifically disclaims any and all liability, including without limitation special, consequential or incidental damages. Buyer is responsible for its products and applications using **onsemi** products, including compliance with all laws, regulations and safety requirements or standards, regardless of any support or applications information provided by **onsemi**. "Typical" parameters which may be provided in **onsemi** data sheets and/or specifications can and do vary in different applications and actual performance may vary over time. All operating parameters, including "Typicals" must be validated for each customer application by customer's technical experts. **onsemi** does not convey any license under any of its intellectual property rights nor the rights of others. **onsemi** products are not designed, intended, or authorized for use as a critical component in life support systems or any FDA Class 3 medical devices or medical devices with a same or similar classification in a foreign jurisdiction or any devices intended for implantation in the human body. Should Buyer purchase or use **onsemi** products for any such unintended or unauthorized application, Buyer shall indemnify and hold **onsemi** and its officers, employees, subsidiaries, affiliates, and distributors harmless against all claims, costs, damages, and expenses, and reasonable attorney fees arising out of, directly or indirectly, any claim of personal injury or death associated with such unintended or unauthorized use, even if such claim alleges that **onsemi** was negligent regarding the design or manufacture of the part. **onsemi** is an Equal Opportunity/Affirmative Action Employer. This literature is subject to all applicable copyright laws and is not for resale in any manner.

ADDITIONAL INFORMATION

TECHNICAL PUBLICATIONS:

Technical Library: www.onsemi.com/design/resources/technical-documentation
onsemi Website: www.onsemi.com

ONLINE SUPPORT: www.onsemi.com/support

For additional information, please contact your local Sales Representative at www.onsemi.com/support/sales