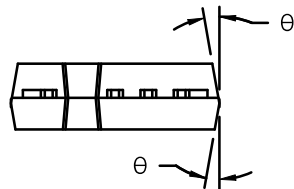
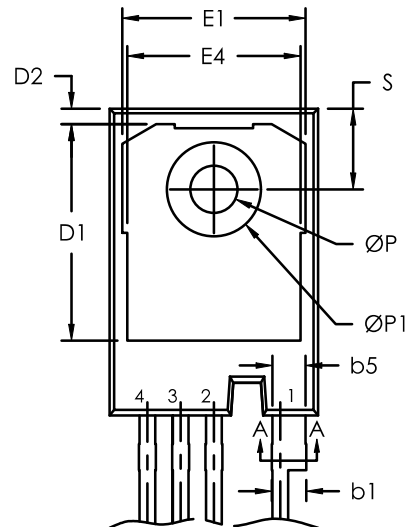
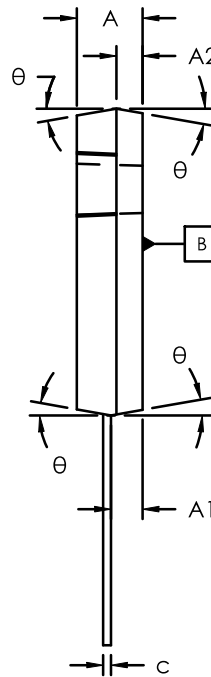
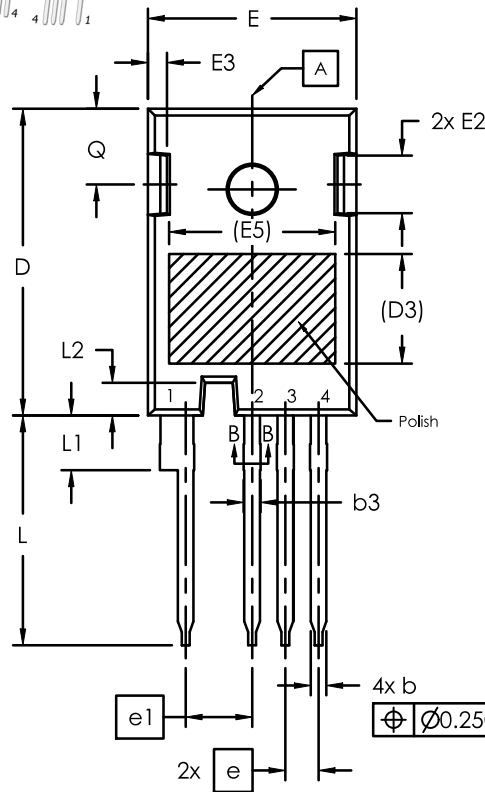
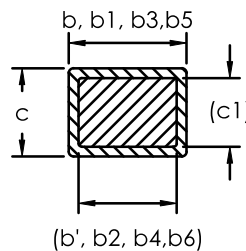


**TO247-4LH 15.94x23.45x5.02, 2.54P**  
CASE 340CV  
ISSUE B

DATE 16 APR 2025



Section A-A, B-B



**NOTE:**

1. Dimensioning and tolerancing as per ASME Y14.5 - 2018
2. Controlling Dimensions = Millimeters
3. Dimensions D and E does not include MOLD FLASH
4. Thermal pad contour optional within dimensions D1 and E1
5. Lead finish uncontrolled in L1
6. ØP to have a max draft angle of 1.5° to the top with MAX. hole diameter of 3.91mm

TO247-4LH			
	mm		
SYM	MIN	NOM	MAX
A	4.80	5.02	5.21
A1	2.21	2.41	2.61
A2	1.80	2.00	2.20
b	1.06	1.20	1.36
b'	1.07	1.20	1.28
b1	2.33	2.53	2.94
b3	1.07	1.20	1.60
b5	2.40	2.54	2.69
b6	2.39	2.53	2.64
c	0.51	0.60	0.75
c'	0.51	0.60	0.72
D	23.30	23.45	23.60
D1	16.25	16.55	17.65
D2	0.95	1.19	1.25
D3	8.38 REF		
E	15.74	15.94	16.14
E1	13.10	14.02	14.32
E2	3.68	4.40	5.10
E3	1.00	1.45	1.90
E4	12.38	13.26	13.43
E5	12.70 REF		
e	2.54 BSC		
e1	5.08 BSC		
L	17.27	17.57	17.87
L1	3.97	4.19	4.39
L2	2.35	2.50	2.65
ØP	3.40	3.61	3.80
ØP1	7.19 REF		
Q	5.49	5.79	6.09
S	6.04	6.17	6.30
θ	10°		

**DOCUMENT NUMBER:** 98AON80645G

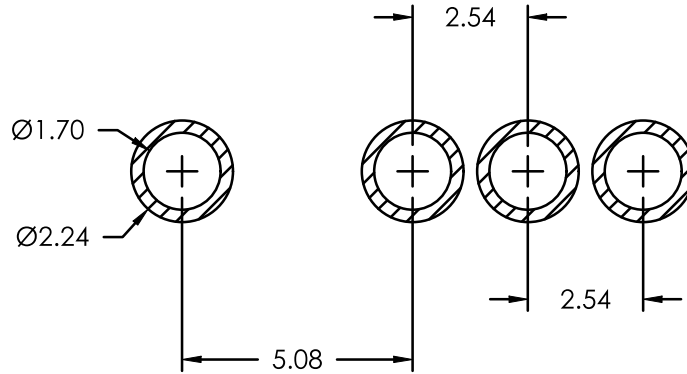
Electronic versions are uncontrolled except when accessed directly from the Document Repository.  
Printed versions are uncontrolled except when stamped "CONTROLLED COPY" in red.

**DESCRIPTION:** TO247-4LH 15.94x23.45x5.02, 2.54P

**PAGE 1 OF 2**

onsemi and onsemi are trademarks of Semiconductor Components Industries, LLC dba onsemi or its subsidiaries in the United States and/or other countries. onsemi reserves the right to make changes without further notice to any products herein. onsemi makes no warranty, representation or guarantee regarding the suitability of its products for any particular purpose, nor does onsemi assume any liability arising out of the application or use of any product or circuit, and specifically disclaims any and all liability, including without limitation special, consequential or incidental damages. onsemi does not convey any license under its patent rights nor the rights of others.

RECOMMENDED PCB THROUGH HOLE



NOTE: LAND PATTERN AND THROUGH HOLE DIMENSIONS SERVE ONLY AS AN INITIAL GUIDE.  
END-USER PCB DESIGN RULES AND TOLERANCES SHOULD ALWAYS PREVAIL.

DOCUMENT NUMBER:	98AON80645G	Electronic versions are uncontrolled except when accessed directly from the Document Repository. Printed versions are uncontrolled except when stamped "CONTROLLED COPY" in red.
DESCRIPTION:	TO247-4LH 15.94x23.45x5.02, 2.54P	PAGE 2 OF 2

**onsemi** and **onsemi** are trademarks of Semiconductor Components Industries, LLC dba **onsemi** or its subsidiaries in the United States and/or other countries. **onsemi** reserves the right to make changes without further notice to any products herein. **onsemi** makes no warranty, representation or guarantee regarding the suitability of its products for any particular purpose, nor does **onsemi** assume any liability arising out of the application or use of any product or circuit, and specifically disclaims any and all liability, including without limitation special, consequential or incidental damages. **onsemi** does not convey any license under its patent rights nor the rights of others.