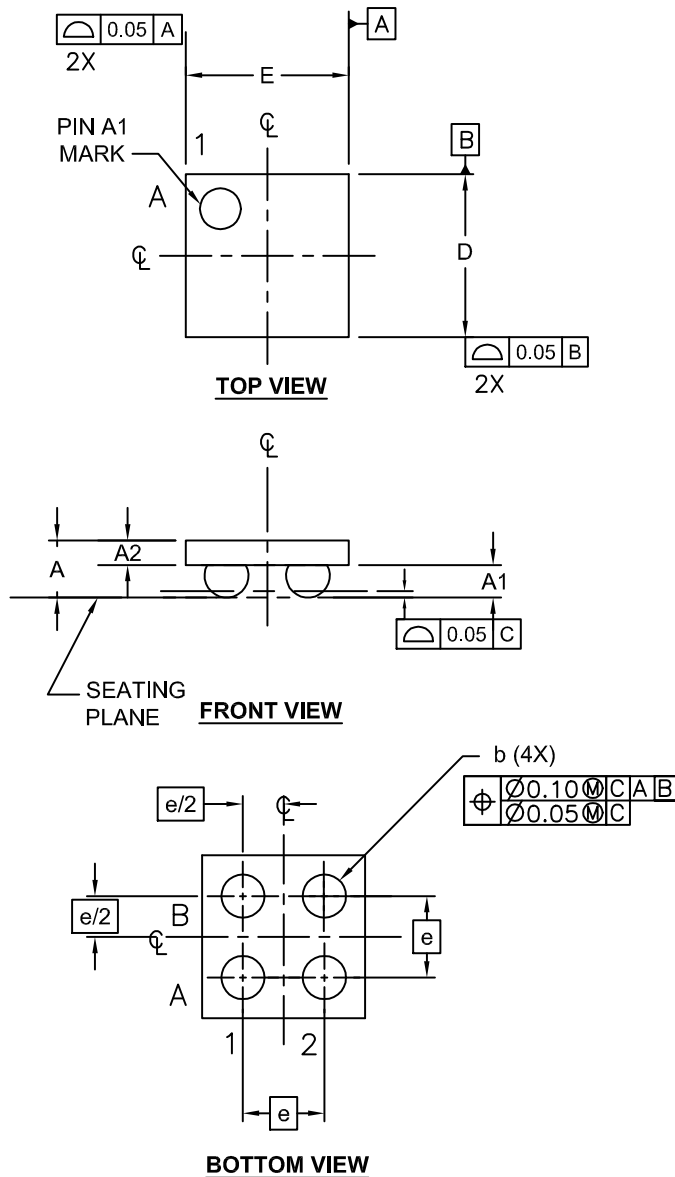


WLCSP4 1x1x0.4
CASE 567PS
ISSUE A

DATE 30 JUL 2021



NOTES: UNLESS OTHERWISE SPECIFIED

A) THIS PACKAGE IS NOT PRESENTLY REGISTERED WITH ANY STANDARDS COMMITTEE.

B) DIMENSIONS ARE IN MILLIMETERS.

C) DRAWING CONFORMS TO ASME

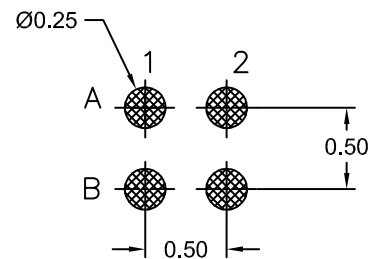
Y14.5M-1994

D) TERMINAL CONFIGURATION TABLE:

GATE	SOURCE	DRAIN
A1	A2, B2	B1

E) DRAWING FILENAME: MKT-UC004ADREV2

DIM	MILLIMETERS		
	MIN.	NOM.	MAX.
A	-	-	0.40
A1	0.00	-	0.235
A2	0.125	0.15	0.162
b	0.24	0.265	0.29
D	0.95	1.00	1.05
E	0.95	1.00	1.05
e	0.50 BSC		
e/2	0.25 BSC		



LAND PATTERN
RECOMMENDATION

*FOR ADDITIONAL INFORMATION ON OUR PB-FREE STRATEGY AND SOLDERING DETAILS, PLEASE DOWNLOAD THE ON SEMICONDUCTOR SOLDERING AND MOUNTING TECHNIQUES REFERENCE MANUAL, SOLDERM/D.

DOCUMENT NUMBER:	98AON13301G	Electronic versions are uncontrolled except when accessed directly from the Document Repository. Printed versions are uncontrolled except when stamped "CONTROLLED COPY" in red.
DESCRIPTION:	WLCSP4 1x1x0.4	PAGE 1 OF 1

onsemi and Onsemi are trademarks of Semiconductor Components Industries, LLC dba onsemi or its subsidiaries in the United States and/or other countries. onsemi reserves the right to make changes without further notice to any products herein. onsemi makes no warranty, representation or guarantee regarding the suitability of its products for any particular purpose, nor does onsemi assume any liability arising out of the application or use of any product or circuit, and specifically disclaims any and all liability, including without limitation special, consequential or incidental damages. onsemi does not convey any license under its patent rights nor the rights of others.