

# ON Semiconductor

## Is Now



To learn more about onsemi™, please visit our website at  
[www.onsemi.com](http://www.onsemi.com)

onsemi and onsemi. and other names, marks, and brands are registered and/or common law trademarks of Semiconductor Components Industries, LLC dba "onsemi" or its affiliates and/or subsidiaries in the United States and/or other countries. onsemi owns the rights to a number of patents, trademarks, copyrights, trade secrets, and other intellectual property. A listing of onsemi product/patent coverage may be accessed at [www.onsemi.com/site/pdf/Patent-Marking.pdf](http://www.onsemi.com/site/pdf/Patent-Marking.pdf). onsemi reserves the right to make changes at any time to any products or information herein, without notice. The information herein is provided "as-is" and onsemi makes no warranty, representation or guarantee regarding the accuracy of the information, product features, availability, functionality, or suitability of its products for any particular purpose, nor does onsemi assume any liability arising out of the application or use of any product or circuit, and specifically disclaims any and all liability, including without limitation special, consequential or incidental damages. Buyer is responsible for its products and applications using onsemi products, including compliance with all laws, regulations and safety requirements or standards, regardless of any support or applications information provided by onsemi. "Typical" parameters which may be provided in onsemi data sheets and/or specifications can and do vary in different applications and actual performance may vary over time. All operating parameters, including "Typicals" must be validated for each customer application by customer's technical experts. onsemi does not convey any license under any of its intellectual property rights nor the rights of others. onsemi products are not designed, intended, or authorized for use as a critical component in life support systems or any FDA Class 3 medical devices or medical devices with a same or similar classification in a foreign jurisdiction or any devices intended for implantation in the human body. Should Buyer purchase or use onsemi products for any such unintended or unauthorized application, Buyer shall indemnify and hold onsemi and its officers, employees, subsidiaries, affiliates, and distributors harmless against all claims, costs, damages, and expenses, and reasonable attorney fees arising out of, directly or indirectly, any claim of personal injury or death associated with such unintended or unauthorized use, even if such claim alleges that onsemi was negligent regarding the design or manufacture of the part. onsemi is an Equal Opportunity/Affirmative Action Employer. This literature is subject to all applicable copyright laws and is not for resale in any manner. Other names and brands may be claimed as the property of others.

## FACT™ I/O Model Kit

Prepared by: Willard Tu



**ON Semiconductor™**

<http://onsemi.com>

### APPLICATION NOTE

#### OBJECTIVE

The objective of providing a spice modelling kit is to allow the customer to perform system level interconnect modelling for the ON Semiconductor FACT logic family. It is not intended for the purpose of performing extensive device modelling.

#### Schematic Information

The kit contains representative circuit schematics of the different I/O structures and a worst case package model schematic used in the FACT family.

#### Input Structures

There are three basic variations of the input structures (Figures 1., 2., and 3.). In all of the schematics, the clamping diodes are shown and the appropriate PMOS:NMOS ratios of the inverter stage. Actual MOS gate sizes may vary, but the ratio will be maintained. The variation of size is the result of custom designing each functional device for speed, which may require different build-up ratios (BUR). For 74ACxxx devices, both ON Semiconductor and Fairchild (second source) use the identical Input buffer structures. However, the for 74ACTxxx devices (TTL input buffer) will vary depending on the source of the design. Once again, the appropriate P:N ratios are depicted in the figures.

#### Output Structure

There are two represented output structures (Figures 4. and 5.); one is the standard output buffer and the other is with tri-state. The size range of this standard output buffer is listed in the figure as:

P-channel (1570 – 1900)

N-channel (780 – 900)

Typically, ON Semiconductor designs use a 1600/800 size output buffer.

#### Transistor Parameters for Typical FACT Output Buffers

##### 1600/800 FACT Output Buffer

PMOS L=2U W=1599U AD=5192.8P AS=4504.1P  
PD=1690.4U PS=1874.7U +NRD=9.375E-4  
NRS=9.375E-4

NMOS L=2U W=799U AD=2596.4P AS=2502.3P  
PD=845.2U PS=1041.5U +NRD=1.875E-3  
NRS=1.875E-3

##### 1900/900 FACT Output Buffer

PMOS L=2U W=1899U AD=6163.6P AS=5227.3P  
PD=2013.0U PS=2181.3U +NRD=7.895E-4  
NRS=7.895E-4

NMOS L=2U W=899U AD=2918.0P AS=2699.7P  
PD=956.5U PS=1129.8U +NRD=1.667E-3  
NRS=1.667E-3

#### Package Model

The package model represents the parasitics as they are seen on a corner pin GND & V<sub>CC</sub> for a 20-pin plastic DIP type package (Figure 6.). For 14-pin and 16-pin plastic DIP packages, reduce inductance by 20% from the 20 pin model. To simulate an SOIC type package, reduce the inductance of the appropriate DIP model by 50%.

#### Spice Parameter Information

In addition to the schematics, a listing of the spice parameters for the transistors are referenced and included (Page 4). These parameters can be used for best, typical, and worst case simulations.

## Summary

The information included in this kit should provide the basic information necessary to do Spice level interconnect

modelling. If any clarification or additional information is necessary, the user is encouraged to contact the FACT Applications or Design personnel for assistance.

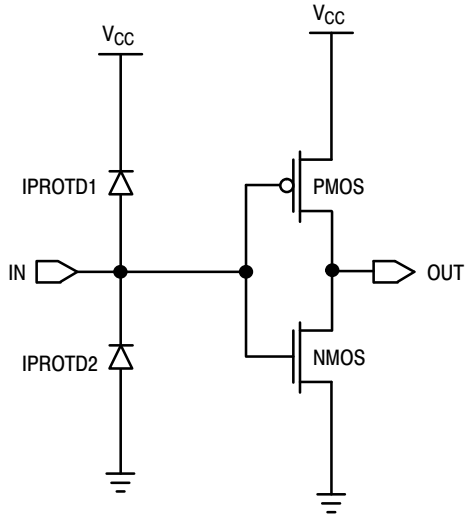


Figure 1. Fairchild/ON Semiconductor 74ACxxx Input Buffer P/N Ratio = 'P:N = 2.5:1'

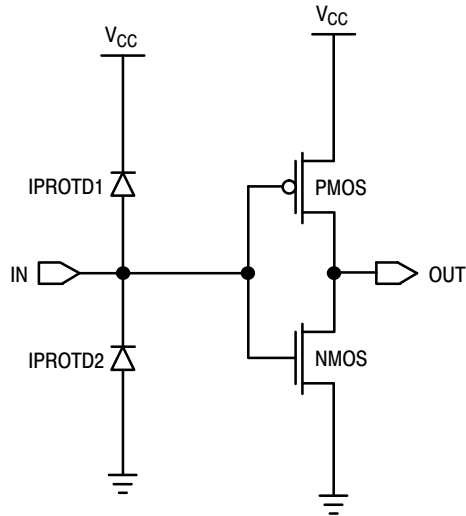


Figure 2. Fairchild 74ACTxxx TTL Input Buffer P/N Ratio = 'P:N = 1:4'

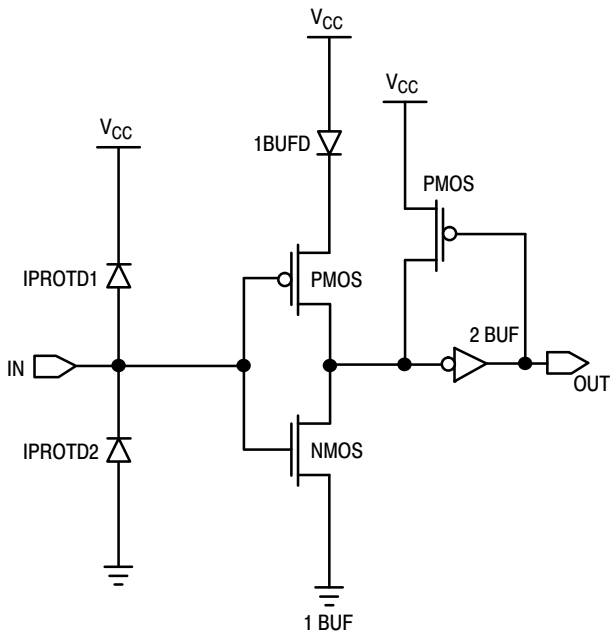


Figure 3. ON Semiconductor 74ACTxxx TTL Input Buffer 1 BUF P/N Ratio = 'P:N = 1:2.5' 2 BUF P/N Ratio = 'P:N = 1:1'

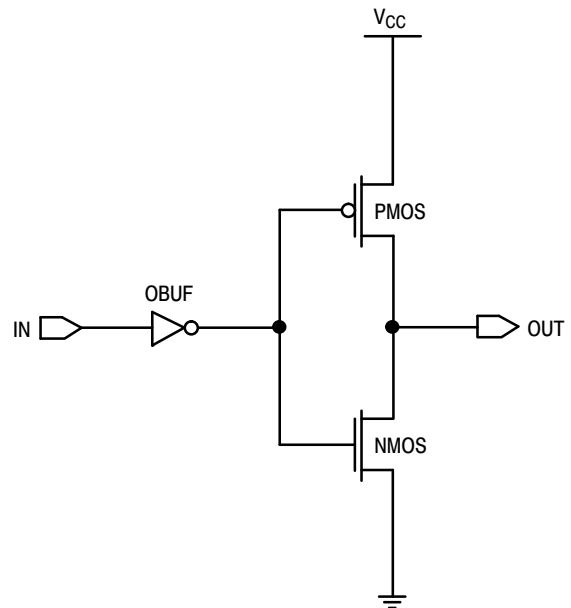
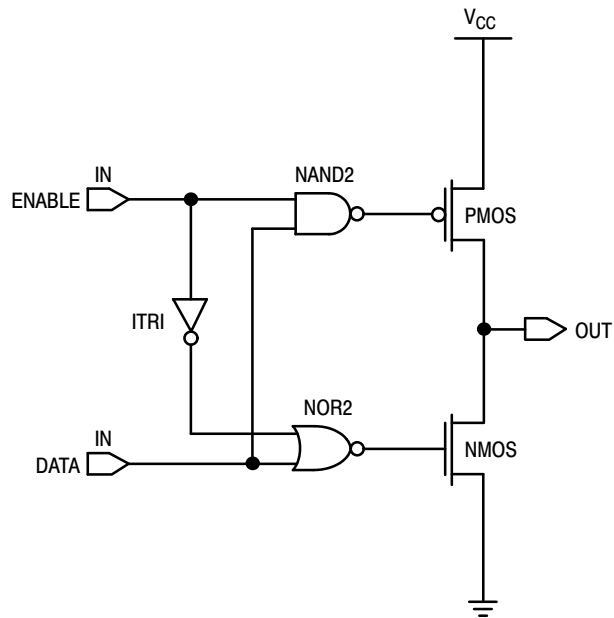
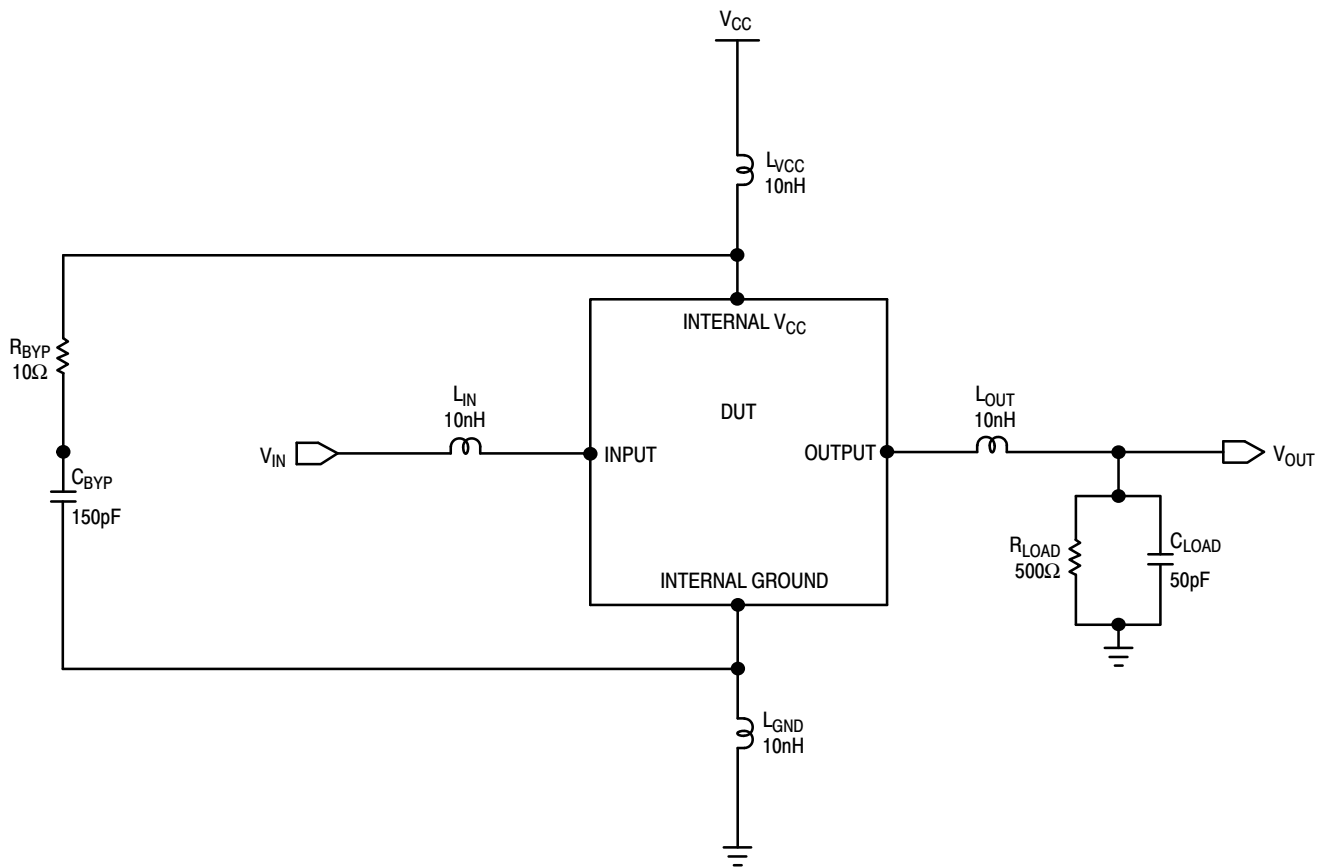


Figure 4. Standard Output Buffer P-Channel Device Size Range (1570→1900) N-Channel Device Size Range (780→900)

# AN1403/D



**Figure 5. Standard Tri-State Output Buffer P-Channel Device Size Range (1570→1900) N-Channel Device Size Range (780→900)**



**Figure 6. Package Model for FACT Circuits**

## MSPICE SIMULATION CARDS

**Note:**

\$BPBN – Best PMOS, Best NMOS

\$BPWN – Best PMOS, Worst NMOS

\$TPTN – Typical PMOS, Typical NMOS

\$WPBN – Worst PMOS, Best NMOS

\$WPWN – Worst PMOS, Worst NMOS

## \$BPBN

```
.MODEL NMOS NMOS LEVEL=3 VTO=0.525 TOX=2.3E-8 NSUB=2.9E16
+ XJ=2.5E-7 LD=4.75E-7 UO=537.8 VMAX=1.45E5 DELTA=1.4
+ THETA=0.038 ETA=0.12 KAPPA=0.06 RSH=40 NFS=2.4E11
+ CGSO=3.5E-10 CGDO=3.5E-10 PB=0.95 CJ=5.8E-4
+ MJ=0.4 CJSW=1.1E-9 MJSW=0.36 TPG=1 XQC=0.4
```

## .MODEL PMOS PMOS LEVEL=3

```
VTO=-0.55 TOX=2.3E-8 NSUB=1E16
+ XJ=3E-7 LD=4.75E-7 UO=199.7 VMAX=1.4E5 DELTA=0.75
+ THETA=0.08 ETA=0.09 KAPPA=2.5 RSH=120 NFS=1.68E11
+ CGSO=6.2E-10 CGDO=6.2E-10 PB=0.87 CJ=2.42E-4
+ MJ=0.4 CJSW=4.66E-10 MJSW=0.36 TPG=-1 XQC=0.4
```

#

## \$BPWN

#

## .MODEL PMOS PMOS LEVEL=3

```
VTO=-0.55 TOX=2.3E-8 NSUB=1E16
+ XJ=3E-7 LD=4.75E-7 UO=199.7 VMAX=1.4E5 DELTA=0.75
+ THETA=0.08 ETA=0.09 KAPPA=2.5 RSH=120 NFS=1.68E11
+ CGSO=6.2E-10 CGDO=6.2E-10 PB=0.87 CJ=2.42E-4
+ MJ=0.4 CJSW=4.66E-10 MJSW=0.36 TPG=-1 XQC=0.4
```

## .MODEL NMOS NMOS LEVEL=3

```
VTO=0.865 TOX=2.8E-8 NSUB=2.9E16
+ XJ=2.5E-7 LD=2.25E-7 UO=537.8 VMAX=1.45E5 DELTA=1.4
+ THETA=0.038 ETA=0.12 KAPPA=0.06 RSH=60 NFS=2.4E11
+ CGSO=3.5E-10 CGDO=3.5E-10 PB=0.95 CJ=5.8E-4
+ MJ=0.4 CJSW=1.1E-9 MJSW=0.36 TPG=1 XQC=0.4
```

#

## \$TPTN

#

## .MODEL NMOS NMOS LEVEL=3

```
VTO=0.695 TOX=2.55E-8 NSUB=2.9E16
+ XJ=2.5E-7 LD=3.5E-7 UO=537.8 VMAX=1.45E5 DELTA=1.4
+ THETA=0.038 ETA=0.12 KAPPA=0.06 RSH=41 NFS=2.4E11
+ CGSO=3.5E-10 CGDO=3.5E-10 PB=0.95 CJ=5.8E-4
+ MJ=0.4 CJSW=1.1E-9 MJSW=0.36 TPG=1 XQC=0.4
```

## .MODEL PMOS PMOS LEVEL=3

```
VTO=-0.72 TOX=2.55E-8 NSUB=1E16
+ XJ=3E-7 LD=3.5E-7 UO=199.7 VMAX=1.4E5 DELTA=0.75
+ THETA=0.08 ETA=0.09 KAPPA=2.5 RSH=146 NFS=1.68E11
+ CGSO=6.2E-10 CGDO=6.2E-10 PB=0.87 CJ=2.42E-4
+ MJ=0.4 CJSW=4.66E-10 MJSW=0.36 TPG=-1 XQC=0.4
```

#

## \$WPBN

#


## .MODEL NMOS NMOS LEVEL=3

```
VTO=0.525 TOX=2.3E-8 NSUB=2.9E16
+ XJ=2.5E-7 LD=4.75E-7 UO=537.8 VMAX=1.45E5 DELTA=1.4
+ THETA=0.038 ETA=0.12 KAPPA=0.06 RSH=40 NFS=2.4E11
+ CGSO=3.5E-10 CGDO=3.5E-10 PB=0.95 CJ=5.8E-4
+ MJ=0.4 CJSW=1.1E-9 MJSW=0.36 TPG=1 XQC=0.4
```

## AN1403/D

.MODEL PMOS PMOS LEVEL=3 VTO=-0.89 TOX=2.8E-8 NSUB=1E16  
+ XJ=3E-7 LD=2.25E-7 UO=199.7 VMAX=1.4E5 DELTA=0.75  
+ THETA=0.08 ETA=0.09 KAPPA=2.5 RSH=160 NFS=1.68E11  
+ CGSO=6.2E-10 CGDO=6.2E-10 PB=0.87 CJ=2.42E-4  
+ MJ=0.4 CJSW=4.66E-10 MJSW=0.36 TPG=-1 XQC=0.4  
#  
\$WPWN  
#  
.MODEL NMOS NMOS LEVEL=3 VTO=0.865 TOX=2.8E-8 NSUB=2.9E16  
+ XJ=2.5E-7 LD=2.25E-7 UO=537.8 VMAX=1.45E5 DELTA=1.4  
+ THETA=0.038 ETA=0.12 KAPPA=0.06 RSH=60 NFS=2.4E11  
+ CGSO=3.5E-10 CGDO=3.5E-10 PB=0.95 CJ=5.8E-4  
+ MJ=0.4 CJSW=1.1E-9 MJSW=0.36 TPG=1 XQC=0.4  
  
.MODEL PMOS PMOS LEVEL=3 VTO=-0.89 TOX=2.8E-8 NSUB=1E16  
+ XJ=3E-7 LD=2.25E-7 UO=199.7 VMAX=1.4E5 DELTA=0.75  
+ THETA=0.08 ETA=0.09 KAPPA=2.5 RSH=160 NFS=1.68E11  
+ CGSO=6.2E-10 CGDO=6.2E-10 PB=0.87 CJ=2.42E-4  
+ MJ=0.4 CJSW=4.66E-10 MJSW=0.36 TPG=-1 XQC=0.4

FACT is a trademark of the Fairchild Semiconductor Corporation.

**ON Semiconductor** and  are registered trademarks of Semiconductor Components Industries, LLC (SCILLC). SCILLC reserves the right to make changes without further notice to any products herein. SCILLC makes no warranty, representation or guarantee regarding the suitability of its products for any particular purpose, nor does SCILLC assume any liability arising out of the application or use of any product or circuit, and specifically disclaims any and all liability, including without limitation special, consequential or incidental damages. "Typical" parameters which may be provided in SCILLC data sheets and/or specifications can and do vary in different applications and actual performance may vary over time. All operating parameters, including "Typicals" must be validated for each customer application by customer's technical experts. SCILLC does not convey any license under its patent rights nor the rights of others. SCILLC products are not designed, intended, or authorized for use as components in systems intended for surgical implant into the body, or other applications intended to support or sustain life, or for any other application in which the failure of the SCILLC product could create a situation where personal injury or death may occur. Should Buyer purchase or use SCILLC products for any such unintended or unauthorized application, Buyer shall indemnify and hold SCILLC and its officers, employees, subsidiaries, affiliates, and distributors harmless against all claims, costs, damages, and expenses, and reasonable attorney fees arising out of, directly or indirectly, any claim of personal injury or death associated with such unintended or unauthorized use, even if such claim alleges that SCILLC was negligent regarding the design or manufacture of the part. SCILLC is an Equal Opportunity/Affirmative Action Employer. This literature is subject to all applicable copyright laws and is not for resale in any manner.

### PUBLICATION ORDERING INFORMATION

#### LITERATURE FULFILLMENT:

Literature Distribution Center for ON Semiconductor  
P.O. Box 5163, Denver, Colorado 80217 USA  
Phone: 303-675-2175 or 800-344-3860 Toll Free USA/Canada  
Fax: 303-675-2176 or 800-344-3867 Toll Free USA/Canada  
Email: [orderlit@onsemi.com](mailto:orderlit@onsemi.com)

**N. American Technical Support:** 800-282-9855 Toll Free  
USA/Canada

**Europe, Middle East and Africa Technical Support:**  
Phone: 421 33 790 2910

**Japan Customer Focus Center**  
Phone: 81-3-5773-3850

**ON Semiconductor Website:** [www.onsemi.com](http://www.onsemi.com)

**Order Literature:** <http://www.onsemi.com/orderlit>

For additional information, please contact your local  
Sales Representative