

# ON Semiconductor

## Is Now

# onsemi™

To learn more about onsemi™, please visit our website at  
[www.onsemi.com](http://www.onsemi.com)

---

**onsemi** and **onsemi** and other names, marks, and brands are registered and/or common law trademarks of Semiconductor Components Industries, LLC dba "**onsemi**" or its affiliates and/or subsidiaries in the United States and/or other countries. **onsemi** owns the rights to a number of patents, trademarks, copyrights, trade secrets, and other intellectual property. A listing of **onsemi** product/patent coverage may be accessed at [www.onsemi.com/site/pdf/Patent-Marking.pdf](http://www.onsemi.com/site/pdf/Patent-Marking.pdf). **onsemi** reserves the right to make changes at any time to any products or information herein, without notice. The information herein is provided "as-is" and **onsemi** makes no warranty, representation or guarantee regarding the accuracy of the information, product features, availability, functionality, or suitability of its products for any particular purpose, nor does **onsemi** assume any liability arising out of the application or use of any product or circuit, and specifically disclaims any and all liability, including without limitation special, consequential or incidental damages. Buyer is responsible for its products and applications using **onsemi** products, including compliance with all laws, regulations and safety requirements or standards, regardless of any support or applications information provided by **onsemi**. "Typical" parameters which may be provided in **onsemi** data sheets and/or specifications can and do vary in different applications and actual performance may vary over time. All operating parameters, including "Typicals" must be validated for each customer application by customer's technical experts. **onsemi** does not convey any license under any of its intellectual property rights nor the rights of others. **onsemi** products are not designed, intended, or authorized for use as a critical component in life support systems or any FDA Class 3 medical devices or medical devices with a same or similar classification in a foreign jurisdiction or any devices intended for implantation in the human body. Should Buyer purchase or use **onsemi** products for any such unintended or unauthorized application, Buyer shall indemnify and hold **onsemi** and its officers, employees, subsidiaries, affiliates, and distributors harmless against all claims, costs, damages, and expenses, and reasonable attorney fees arising out of, directly or indirectly, any claim of personal injury or death associated with such unintended or unauthorized use, even if such claim alleges that **onsemi** was negligent regarding the design or manufacture of the part. **onsemi** is an Equal Opportunity/Affirmative Action Employer. This literature is subject to all applicable copyright laws and is not for resale in any manner. Other names and brands may be claimed as the property of others.



ON Semiconductor

DN06043/D

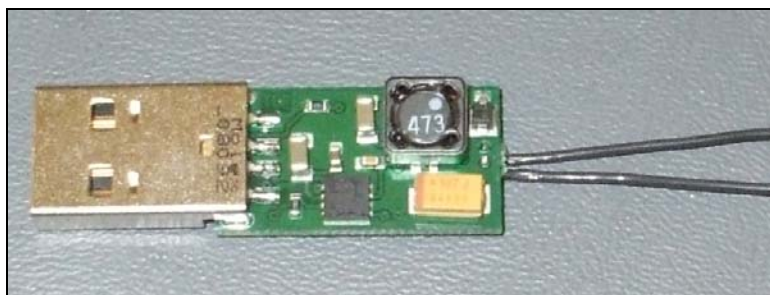
## Design Note – DN06043/D USB to 6V 0.3A USB Charger

Device	Application	Input Voltage	Output Power	Topology	I/O Isolation
NCP3063	Consumer	4.5-5.5 V	1.8W	Zeta	Yes

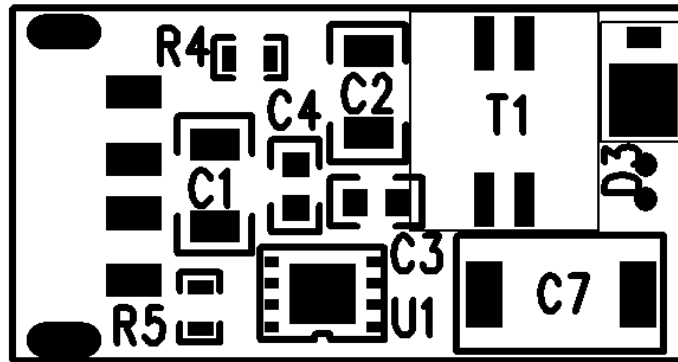
Characteristic	Min	Typ	Max	Unit
Output Voltage		6.0		V
Output Current		0.3	0.7	A
Oscillator Frequency		250		kHz
Output Voltage Ripple		100		mVpk-pk
Load Regulation ( $V_{in} = 5V, I_{out} = 0.0 - 0.3A$ )		0.7		%
PCB Dimensions	13mm X 25mm x 0.4mm			

### Circuit Description

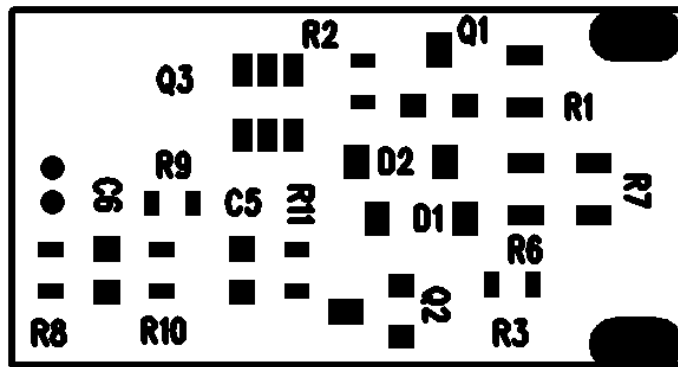
This circuit is design to operate as a non inverting Buck-Boost (Zeta Topology) producing a fixed voltage 6.0V output from a standard USB output. It provides a maximum of 0.3A. The current limit circuit operates at loads higher than 0.3A and is compliant with the USB 2.5W maximum power draw. All devices are less than 45degC at ambient temperature. This design utilizes the NCP3063 DFN Device with slope compensation to reduce burst mode ripple effects.



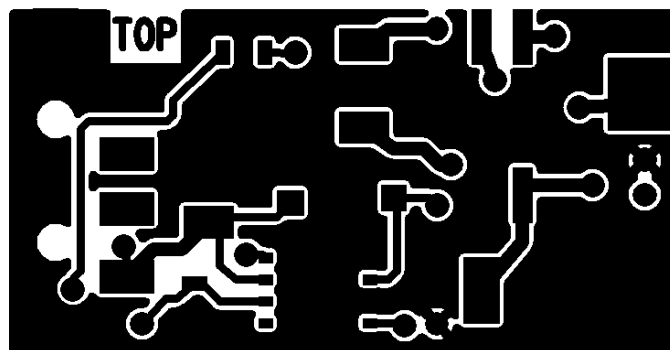
# PCB Details



Top Device

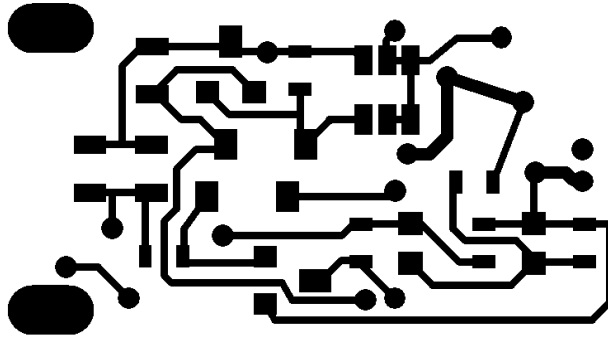


Bottom Device (Viewed from Back)



Top Metal

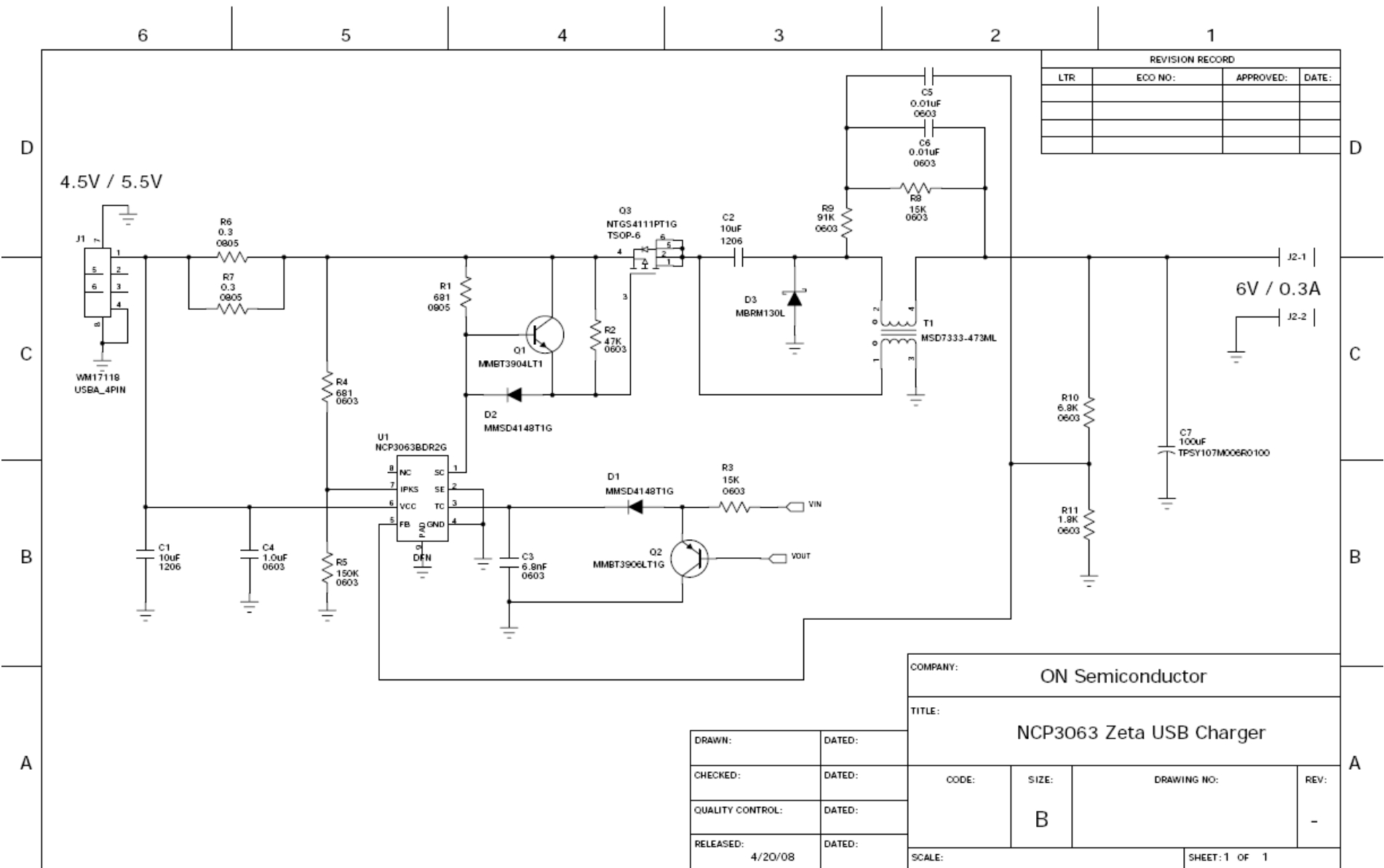
DN06043/D



Bottom Metal

Gerber Files available upon request

# DN06043/D



REVISION RECORD			
LTR	ECO NO:	APPROVED:	DATE:

COMPANY: ON Semiconductor			
TITLE: NCP3063 Zeta USB Charger			
CODE:	SIZE:	DRAWING NO:	REV:
	B		-
SCALE:			SHEET: 1 OF 1

DRAWN:	DATED:
CHECKED:	DATED:
QUALITY CONTROL:	DATED:
RELEASED: 4/20/08	DATED:

## Schematic

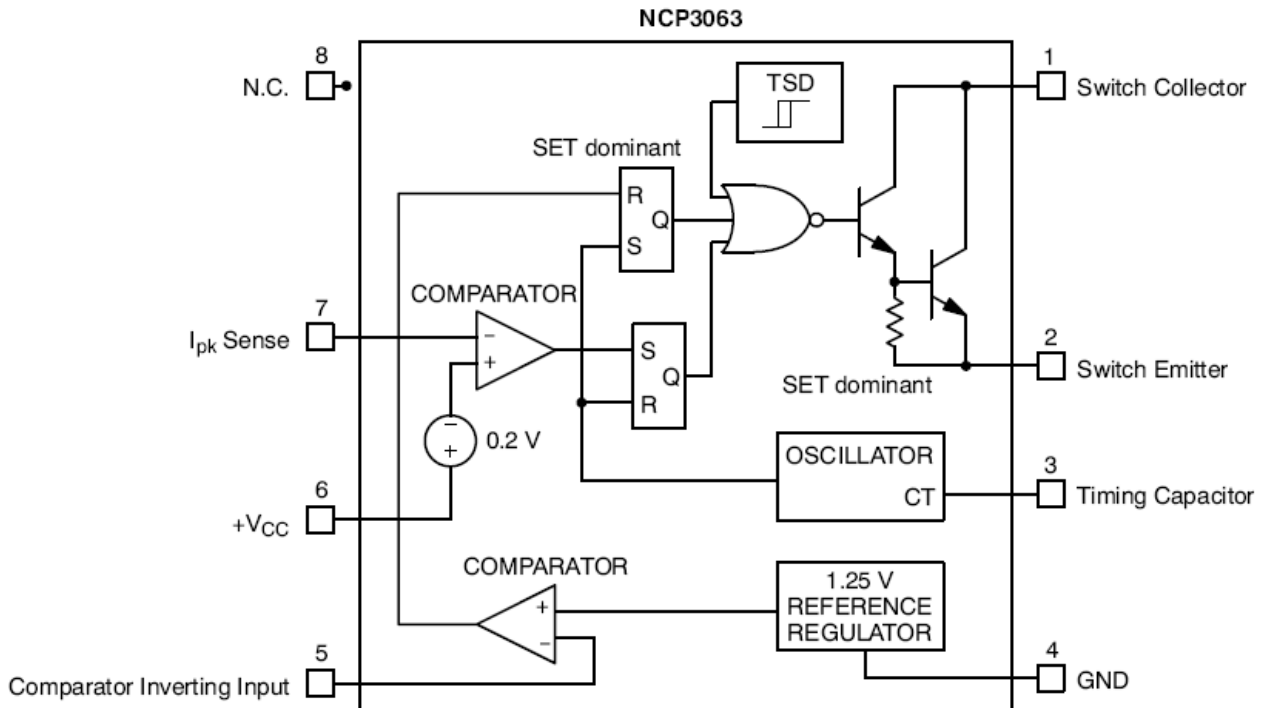
Rev 0 - June, 2008

**DN06043/D**

<b>QTY</b>	<b>REF</b>	<b>VALUE</b>	<b>DESCRIPTION</b>	
2	C5-6	0.01uF	CAP_0603,0.01uF	Ceramic Chip Capacitor
1	C4	1.0uF	CAP_0603,0.1uF	Ceramic Chip Capacitor
1	C3	6.8nF	CAP_0603,6.8nF	Ceramic Chip Capacitor
2	C1-2	10uF	CAP_1206,10uF	Ceramic Chip Capacitor
1	D3	1A; 100V	MBRM130L,1A; 100V	Schottky Power Rectifier
1	Q2	PNP	MMBT3904,PNP	General Purpose NPN Transistor
1	Q1	PNP	MMBT3904LT1,PNP	General Purpose NPN Transistor
2	D1-2	100Vr	MMSD4148T1_SOD-123,100Vr,N/A	Switching Diode
1	T1	47uH	MSD7333-473ML	Coupled Inductor - Coilcraft
1	Q3		NTGS4111P	PFET
1	R11	1.8K	RES0603,1.8K	SURFACE MOUNT RESISTOR 0.031 X 0.061 INCHES, 1/10W
1	R8	15K	RES0603,15K	SURFACE MOUNT RESISTOR 0.031 X 0.061 INCHES, 1/10W
1	R10	6.8K	RES0603,6.8K	SURFACE MOUNT RESISTOR 0.031 X 0.061 INCHES, 1/10W
1	R9	91K	RES0603,91K	SURFACE MOUNT RESISTOR 0.031 X 0.061 INCHES, 1/10W
1	R5	150K	RES_0603,150K,±1.0%	Resistor
1	R3	15K	RES_0603,15K,±1.0%	Resistor
1	R2	47K	RES_0603,47K,±1.0%	Resistor
1	R4	681	RES_0603,680,±1.0%	Resistor
2	R6-7	0.3	RES_0805,0.3,±1.0%	Resistor
1	R1	681	RES_0805,680,±1.0%	Resistor
1	J2		SIP-2P-MICRO	GENERIC 2 PIN SIP HEADER .100 CENTERS
1	C7	100uF	TPSY107M006R0100,100uF	Tantalum Capacitor
1	J1	NA	WM17118	Molex USB Connector
1	U1	40 V 1.5A	NCP3063BDR2G	1.5 A, 150 kHz Switching Regulator

**Bill of Materials**

## Block Diagram - NCP3063



### PIN DESCRIPTION

Pin No.	Pin Name	Description
1	Switch Collector	Internal Darlington switch collector
2	Switch Emitter	Internal Darlington switch emitter
3	Timing Capacitor Oscillator Input	Timing Capacitor
4	GND	Ground pin for all internal circuits
5	Comparator Inverting Input	Inverting input pin of internal comparator
6	V <sub>CC</sub>	Voltage Supply
7	I <sub>pk</sub> Sense	Peak Current Sense Input to monitor the voltage drop across an external resistor to limit the peak current through the circuit
8	N.C.	Pin Not Connected
Exposed Pad	Exposed Pad	The exposed pad beneath the package must be connected to GND (Pin 4). Additionally, using proper layout techniques, the exposed pad can greatly enhance the power dissipation capabilities of the NCP3063.

# DN06043/D

## Performance Information

The following Figures show typical measured performance of the NCP3063 in this evaluation board

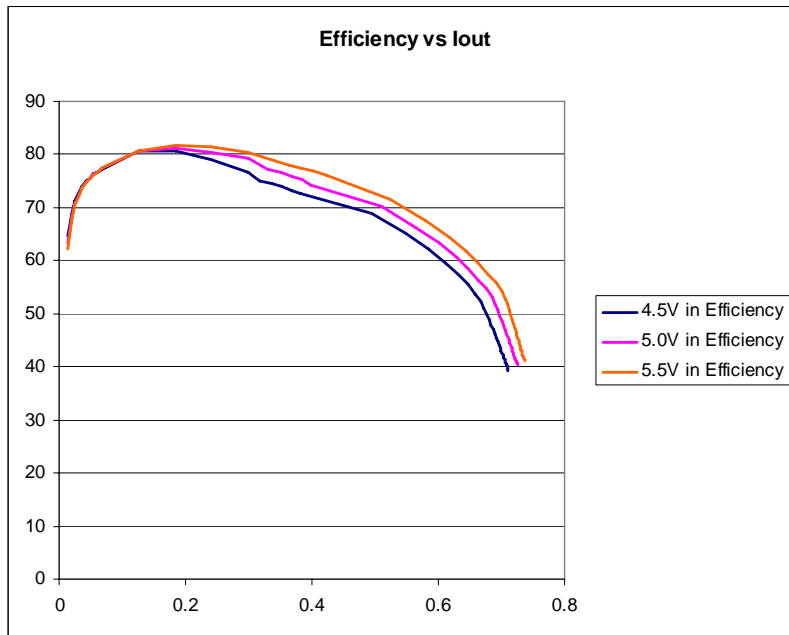


Figure 1 –Efficiency vs Load Current

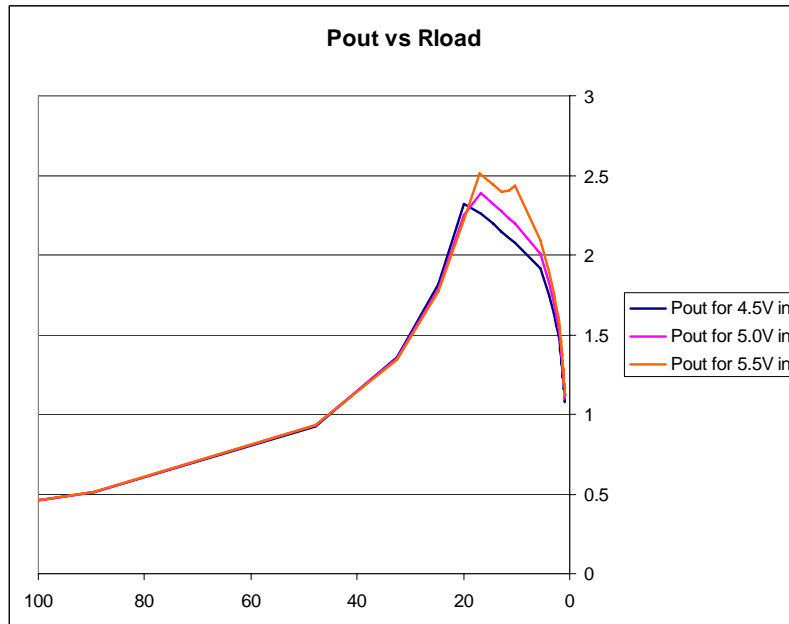
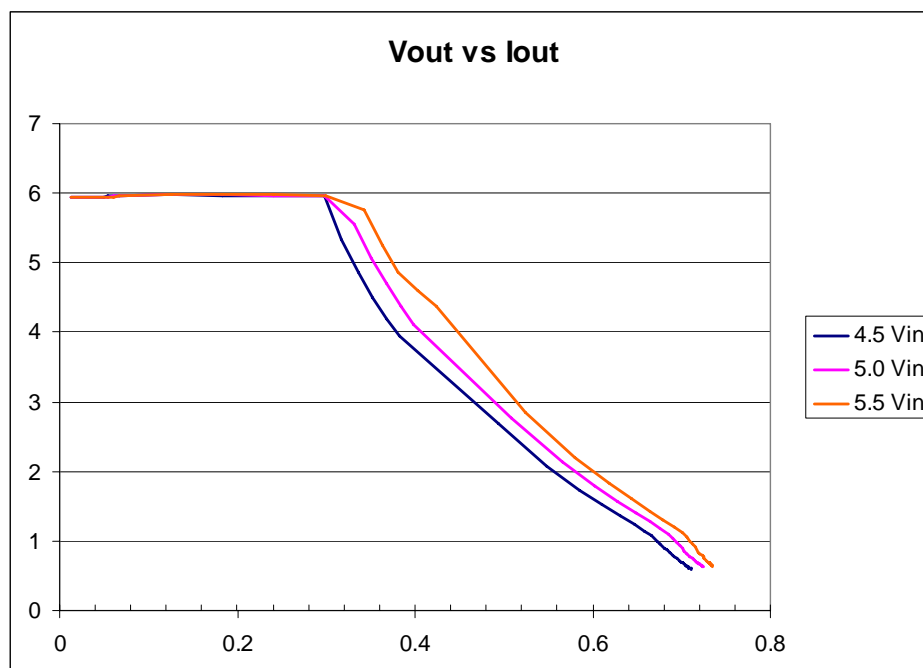


Figure 2 – Output Power vs Load Resistance



## DN06043/D



**Figure 3 – Output Voltage vs Output Current**

© 2008 ON Semiconductor.

**Disclaimer:** ON Semiconductor is providing this design note "AS IS" and does not assume any liability arising from its use; nor does ON Semiconductor convey any license to its or any third party's intellectual property rights. This document is provided only to assist customers in evaluation of the referenced circuit implementation and the recipient assumes all liability and risk associated with its use, including, but not limited to, compliance with all regulatory standards. ON Semiconductor may change any of its products at any time, without notice.

*Design note created by Tom Duffy and Tim Kaske, e-mail: Tom.Duffy@onsemi.com & Tim.Kaske@onsemi.com*