

05/07/2010

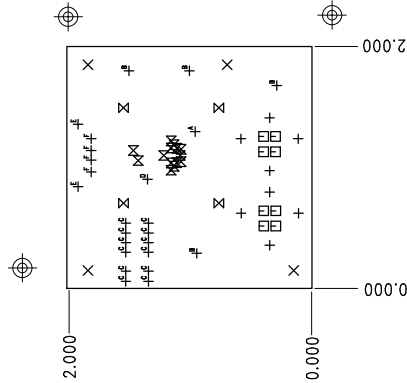
NOTES: (Unless Otherwise Specified)

1. Latest revisions shall apply to all specifications.
2. Fabricate PCB in accordance with IPC-A-600; using supplied CAD Data. Board data viewed from primary side (layer 1). Board shall meet the requirements of UL796 with a flammability rating of 94V-0. Vendors UL logo or designation, date code, and UL rating shall be located in etch on the secondary side of the board. If space is limited, it is permissible to locate markings on secondary legend.
3. Materials: 170 TG FR4 or better, RoHS Compliant
Refer to layer stack-up for copper weight and dielectric thickness.
4. Impedance: Refer to layer stack-up.
5. Finish – .00005" of Hard Gold over .0002" Nickel
6. Soldermask: Color – Green, Type – LPI, Sides – Both.
7. Legend (silkscreen): No legend allowed on exposed lands.
Color – White, permanent, organic, non-conductive epoxy ink.
8. Electrical Test – 100% electrical test required and verified to IPC-356 netlist provided. Not applicable for double sided boards.
9. Warp and twist shall not exceed 10% (.010" per linear inch).
10. Tolerances:
Finished Plated through hole tolerance is +/- .003".
Non-plated through hole tolerance is +/- .001".
Board profile +/- .010".
11. Conductor widths shall be within +/- .001 of supplied artwork (except for impedance signals).
12. Remove all burrs and sharp edges > .015".
13. CAM to remove all ODD Apertures.

Special Instructions:

Impedance Tolerance: $\pm 5\%$. (When defined in above stacking.) EBTech designs impedance line widths with approximately .0015"etch tolerance included. Fabrication shop to modify line width to meet impedance specification. Fabrication shop shall not modify dielectric thickness defined on the layer stack-up without EBTech approval. Fabrication shop to use areas noted on the layer stack-up as "Adjust shop option, to meet overall thickness specification."

	SIZE	QTY	SYM	PLATED	TOL
10	14	14	⊠	YES	Per_default_and_notes
31	12	12	⊠	YES	Per_default_and_notes
35	4	4	⊠	YES	Per_default_and_notes
37.4	8	8	⊠	YES	Per_default_and_notes
91	2	2	⊠	YES	Per_default_and_notes
92.52	8	8	⊠	YES	Per_default_and_notes
175	4	4	⊠	YES	Per_default_and_notes
48	1	1	⊠	NO	Per_default_and_notes
60	1	1	⊠	NO	Per_default_and_notes
83	4	4	⊠	NO	Per_default_and_notes
150	4	4	⊠	NO	Per_default_and_notes



EBTech EVALUATION BOARD TECHNOLOGIES, INC. 10000 W. 200 CHAMBERLAIN, A.Z. 85225 U.S.A. INT +1-486-921-1920	BOARD NAME NCNT154- DEMO BOARD		DESIGNER T.K.	ENGINEER V.R.
	PART NUMBER EBT1745-01	REV A	DRAWN S.M.	DATE 05/07/2010
CLIENT DESCRIPTION FABRICATION DRAWING		GENERAL E1745 AF AB.PHO		

ADDITIONAL NOTES:

4X - 0.083" Drills require a 0.153" top counterbore 0.070" deep.

A

UNLESS OTHERWISE SPECIFIED DIMENSIONS ARE INCHES. FRACTIONS TOLERANCES ARE: .0001 XX +/- .001 DO NOT SCALE DRAWING	APPROVALS	DATE	EBTech		
			FABRICATION DRAWING		
			TITLE		
			DRAWN: SCHEMALS Anders Klovneson ENGINEER		
			CHECKED Vince Richards		
FINISH	APPROVED		SIZE	DWG. NO.	REV
			C	EBT1745-01	A
SIMILAR TO	MARKING SYMBOL	ISSUED	SCALE:		SHEET 1 OF 1

4

3.

2

1