

## Transformer Specification

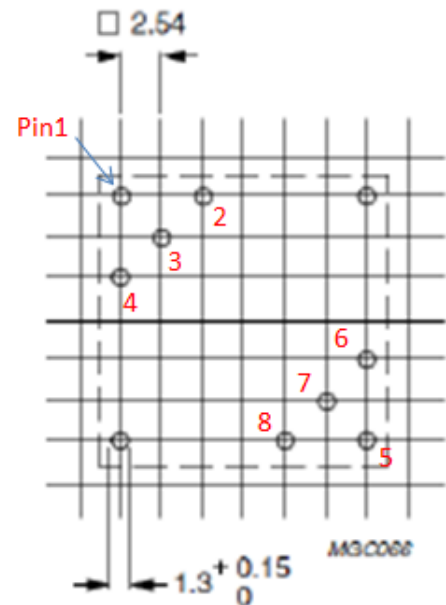
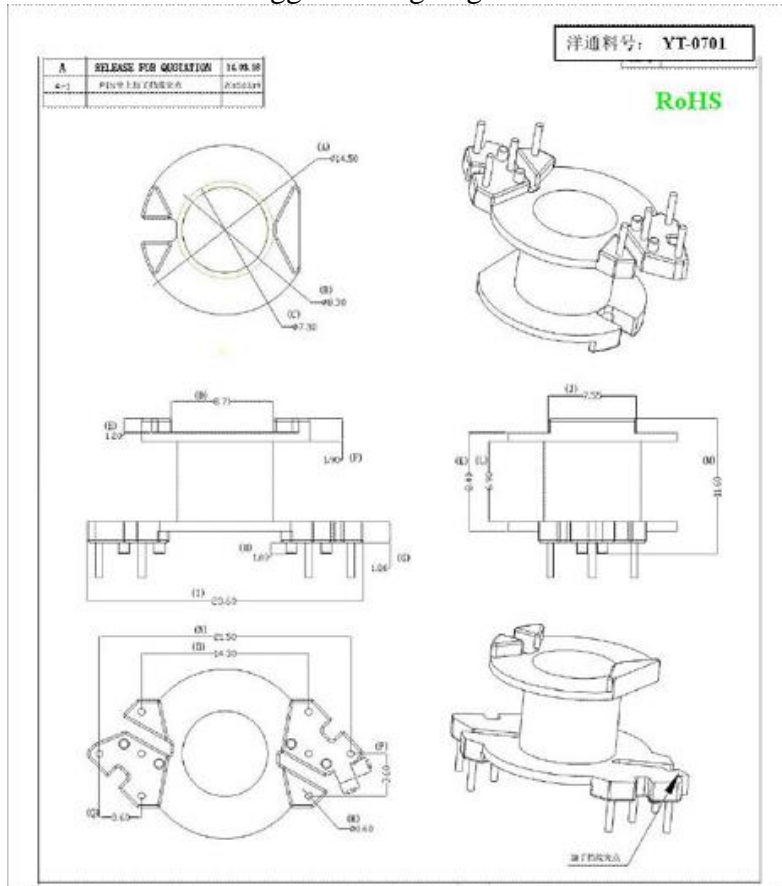
## 1. Core and Bobbin

Core Type: RM7

Core material: Hitachi ML-29D, TDK N49 or equivalent

Bobbin: 8Pin TH type bobbin

**Bobbin vendor: Dongguan Yangtong YT-0701 or same size**



变压器引脚编号(顶视图)  
Transformer pin out(top view)

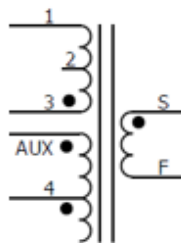
## 2. Electrical diagram

WD5=Primary, 20T, 15x0.1mm Litz

WD1=Primary, 20T, 15X0.1mm Litz

WD4=Auxiliary, 4T, 0.17mm

WD2=Shielding, 15T, 2x0.17mm



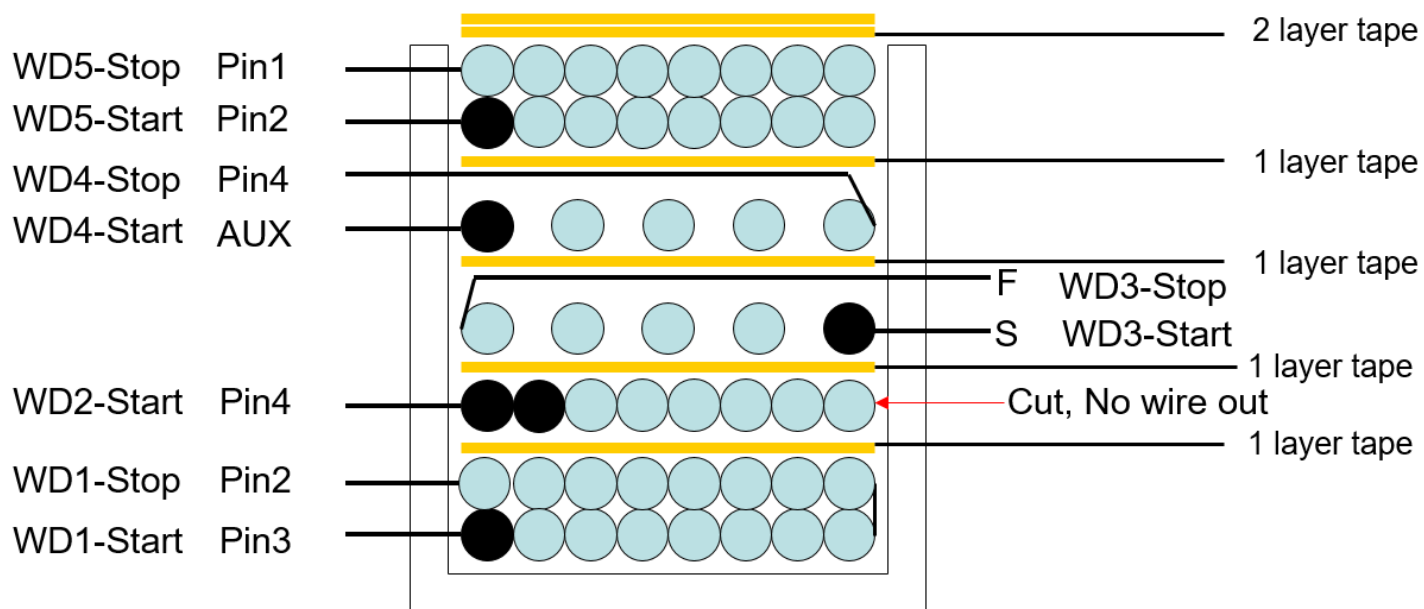
WD3=Output

4T, 2x30x0.08mm triple isolating Litz

### 3. Electrical specification

<b>Electrical Strength</b>	1 second, 60 Hz, from pins 1, 2, 3, 4 to S, F	3000V
<b>Primary Inductance</b>	Pins 1-3, all other windings open, measured at 10 kHz, 1V	230uH+/-10%

#### 4. Transformer building construction diagram



#### 5. Notes

- WD1, WD5 绕组均匀密绕两层, WD2, WD3 绕组均匀密绕一层, WD4 疏绕一层。  
如果有绕不下或绕不满的情况请略微调整线径
- 飞线 "AUX" 留的长度大约 3CM, 飞线 "S", "F" 留的长度大约 2CM,