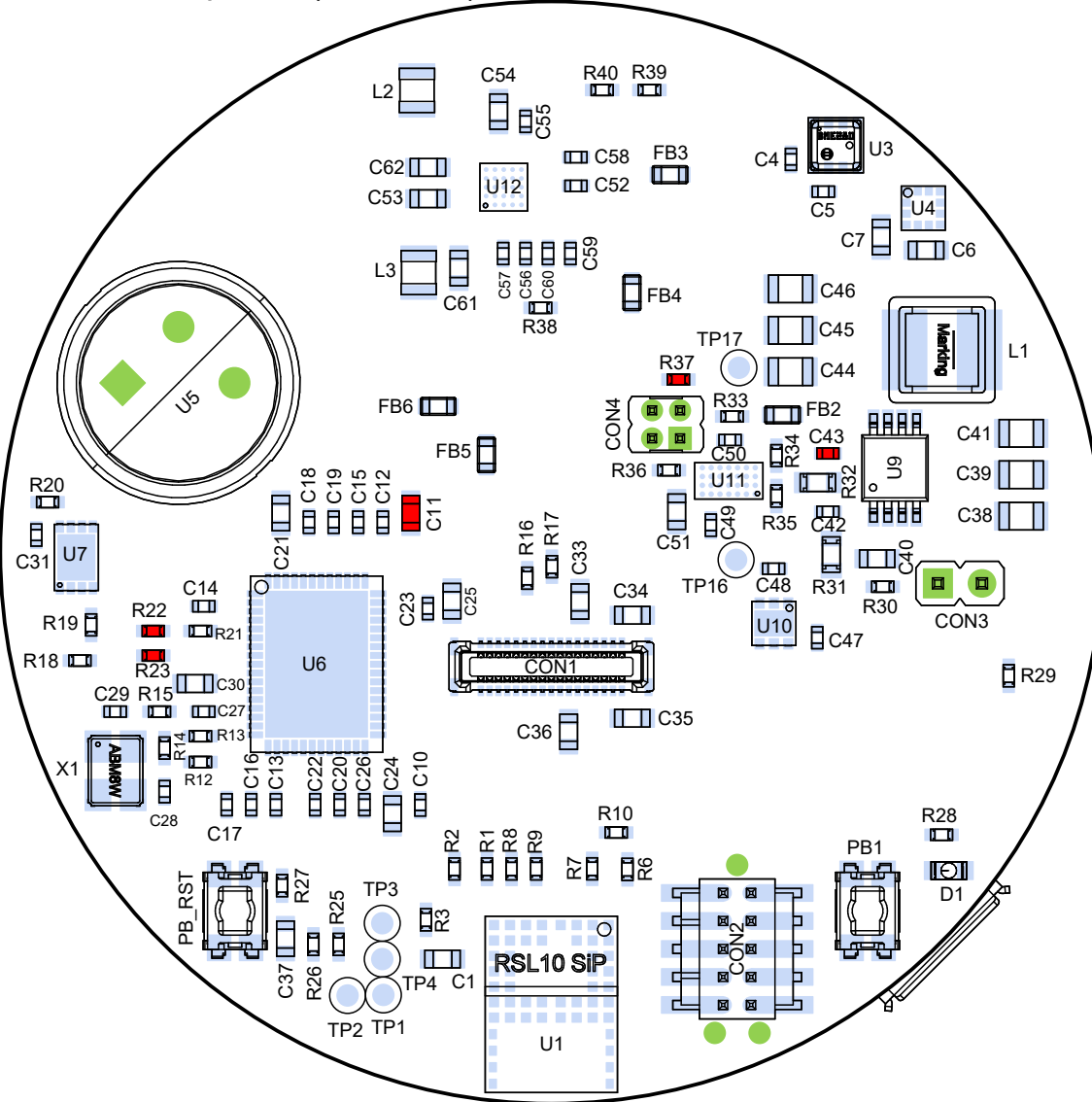


Bill Of Materials - Top side components

Designator	Comment	Quantity
C1, C34, C35	2μ2	3
C2	1 μF	1
C4, C5, C8, C10, C12, C14, C15, C16, C17, C18, C19, C22, C23, C26, C27, C31	100 nF	16
C6, C7	100 nF	2
C13, C20	1 μF	2
C21, C25, C30, C33, C36	1 μF	5
C24	10 μF	1
C28, C29, C42	10 pF	3
C32	4n7	1
C37	1 μF	1
C38, C39, C41, C44, C45, C46	22 μF	6
C40	220 nF	1
C47	10 μF	1
C48, C49, C50	1 μF	3
C51	4μ7	1
C52	4μ7	1
C53, C54, C61	10 μF	3
C55, C56, C57, C58, C59, C60	2μ2	6
C62	22 μF	1
CON1	BM20B(0.8)-34DS-0.4V(51)	1
CON2	FTSH-105-01-F-DV-K	1
CON3	620 002 111 21	1
CON4	622 00 4211 21	1
D1	APHD1608LZGCK	1
FB1, FB2	33 Ohm @ 100 MHz	2
FB3, FB4, FB5, FB6	120 Ohm @ 100 MHz	4
L1	10 μH	1
L2	470 nH	1
L3	1 μH	1
PB1, PB_RST	434 153 017 835	2
R1, R2, R16, R17	4k7	4
R3, R6, R7	68	3
R4, R5	68k	2
R8, R9, R12, R13, R15, R25, R29, R33, R36, R38, R39	0R	11
R10, R11, R18, R19, R20	100k	5
R14	1M	1
R21, R34, R35	10k	3
R24	1M	1
R26	560	1
R27	82k	1
R28	3k	1
R30	220k	1
R31	470k	1
R32	267k	1
R40	47k	1
U1	RSL10 SiP	1
U2	FPF1003A	1
U3	BME280	1
U4	BMA400	1
U5	EKMB1307111K	1
U6	SPCV1100A-HV35X	1
U7	LE25U20AQGTGX	1
U8	EMI2121MTTAG	1
U9	NCP1421DMR2G	1
U10	NCP705MT33TCG	1
U11	NCP3901	1
U12	FAN53880UC002X	1
USB	47346-0001	1
X1	12 MHz 10 ppm	1

View from Top side (Scale 3:1)



SECO-RSL10-CAM-COLOR-GEVK		Revision: rev0.3	State: released
Variant name: ARX3A0CSSM050110		Assembly document	Sheet 1 / 4
Engineer: T. Duris	Date: 18. March 2021 16:58		
PCB File: ULP_BLE_Camera.PcbDoc		ON Semiconductor Solution Engineering Center Piestany	
Repository revision: Not in repository			

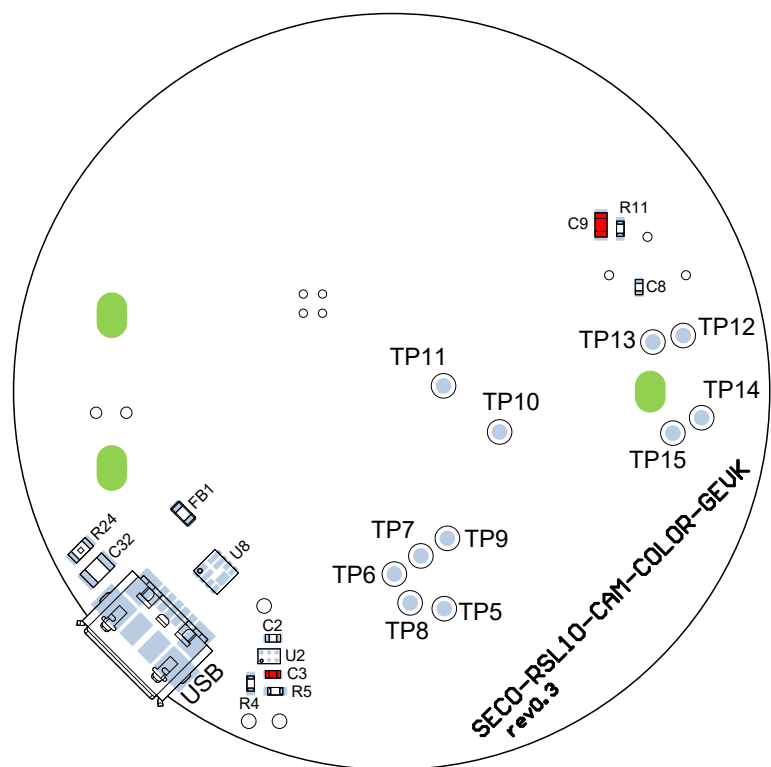
Bill Of Materials - Bottom side components

Designator	Comment	Quantity
C2	1 μ F	1
C8	100 nF	1
C32	4n7	1
FB1	33 Ohm @ 100 MHz	1
R4, R5	68k	2
R11	100k	1
R24	1M	1
U2	FPF1003A	1
U8	EMI2121MTTAG	1
USB	47346-0001	1

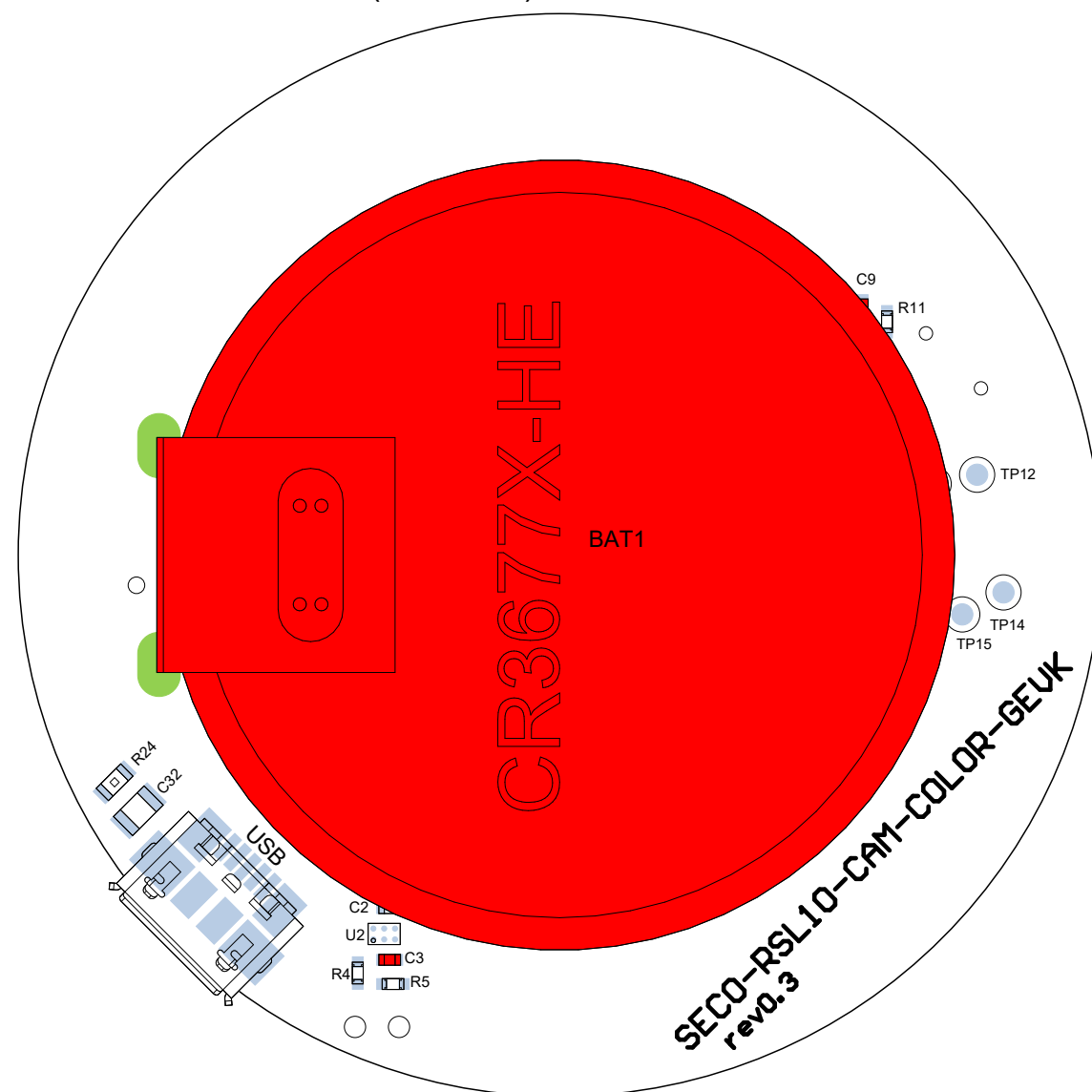
- Only components present in this assembly variant are listed in BoM table on the left
- Components not present in this assembly variant are red coloured

View from Bottom side (Scale 2:1) - Test points

Note: several test points are located underneath the battery and for debugging purposes the battery has to be desoldered/not assembled



View from Bottom side (Scale 3:1)



SECO-RSL10-CAM-COLOR-GEVK

Variant name: ARX3A0CSSM050110

Engineer: T. Duris

Date: 18. March 2021 16:58

PCB File: ULP_BLE_Camera.PcbDoc

Repository revision: Not in repository

Revision:
rev0.3

Assembly
document

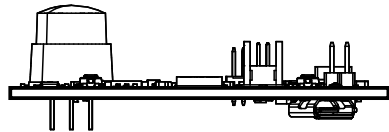
State:
released

Sheet
2 / 4

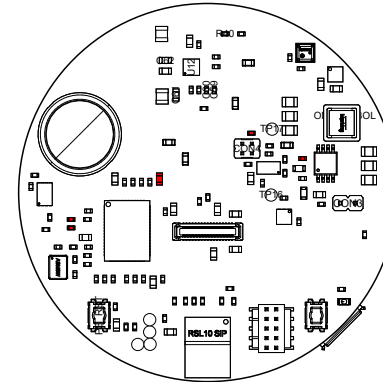
ON Semiconductor
Solution Engineering Center
Piestany



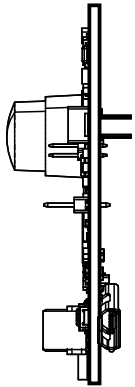
View from Front side (Scale 1:1)



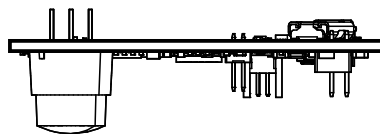
View from Top side (Scale 1:1)



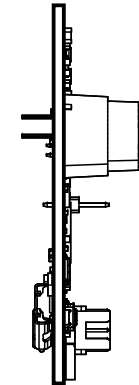
View from Right side (Scale 1:1)



View from Back side (Scale 1:1)



View from Left side (Scale 1:1)



SECO-RSL10-CAM-COLOR-GEVK

Variant name: ARX3A0CSSM050110

Engineer: T. Duris

Date: 18. March 2021 16:58

PCB File: ULP_BLE_Camera.PcbDoc

Repository revision: Not in repository

Revision:
rev0.3

Assembly
document

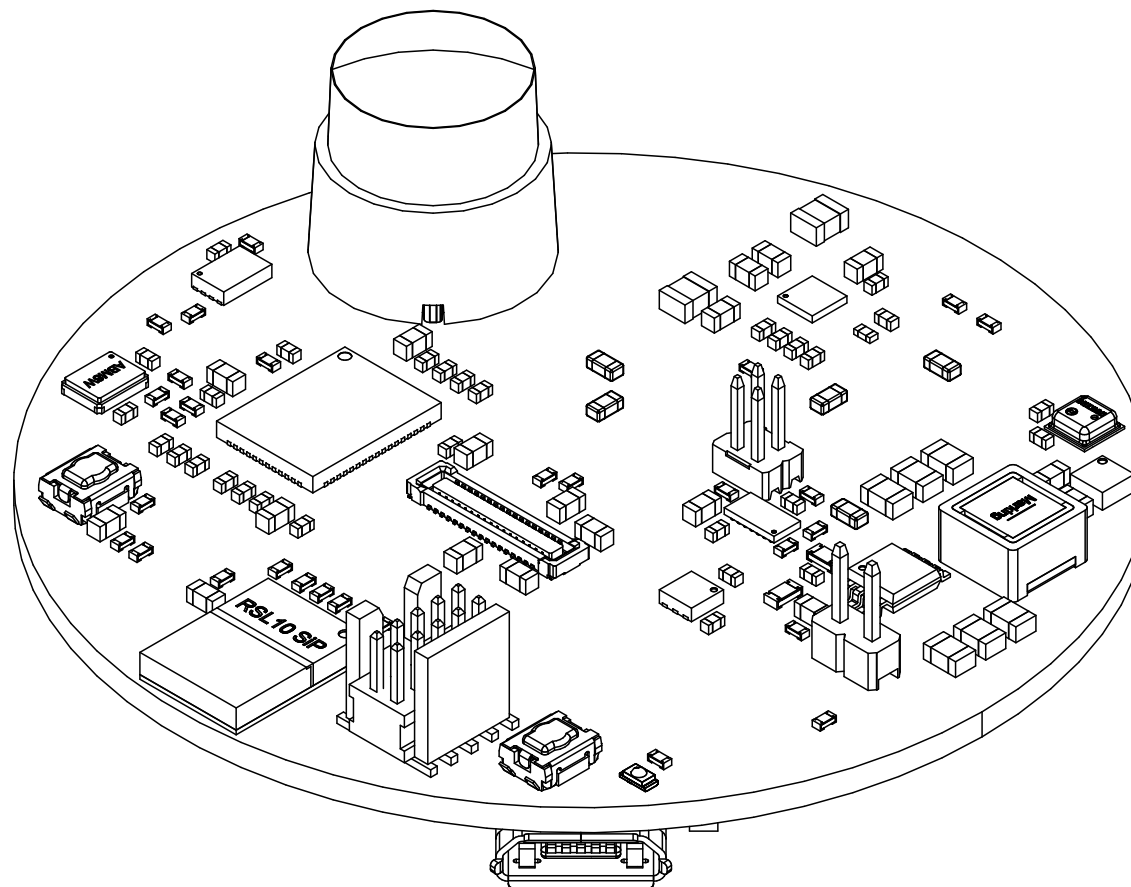
State:
released

Sheet
3 / 4

ON Semiconductor
Solution Engineering Center
Piestany



View from Front side (Scale 3:1)

**SECO-RSL10-CAM-COLOR-GEVK**

Variant name: ARX3A0CSSM050110

Engineer: T. Duris

Date: 18. March 2021 16:58

PCB File: ULP_BLE_Camera.PcbDoc

Repository revision: Not in repository

Revision:
rev0.3State:
releasedAssembly
documentSheet
4 / 4**ON Semiconductor**
Solution Engineering Center
Piestany